

SLC37A1 antibody



Catalog Number: 115370

Product name

SLC37A1 antibody

Specificity

Human, Mouse; other species not tested.

Antibody description

SLC37A1 Rabbit Polyclonal antibody. Positive WB detected in MCF-7 cells, mouse kidney tissue. Observed molecular weight by Western-blot: 60-66 kDa

Preparation

This antibody was obtained by immunization of SLC37A1 recombinant protein (Accession Number: NM_001320537). Purification method: Antigen affinity purified.

Formulation

PBS with 0.1% sodium azide and 50% glycerol pH 7.3.

Storage

Store at -20°C. DO NOT ALIQUOT

Clonality

Polyclonal

Ig Type

Rabbit IgG

Applications

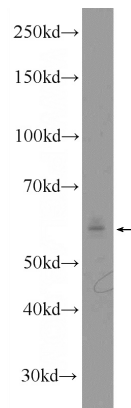
ELISA, WB

Dilutions

Recommended Dilution:

WB: 1:200-1:2000

Validations



MCF-7 cells were subjected to SDS PAGE followed by western blot with Catalog No:115370(SLC37A1 Antibody) at dilution of 1:600