

# SLC35A1 antibody

Catalog Number: 115367

## Product name

SLC35A1 antibody

## Specificity

Human, Mouse, Rat; other species not tested.

## Antibody description

SLC35A1 Rabbit Polyclonal antibody. Positive IHC detected in mouse testis tissue, human skin tissue, human spleen tissue.

## Preparation

This antibody was obtained by immunization of SLC35A1 recombinant protein (Accession Number: NM\_006416). Purification method: Antigen affinity purified.

## Formulation

PBS with 0.02% sodium azide and 50% glycerol pH 7.3.

## Storage

Store at -20°C. DO NOT ALIQUOT

## Clonality

Polyclonal

## Ig Type

Rabbit IgG

## Applications

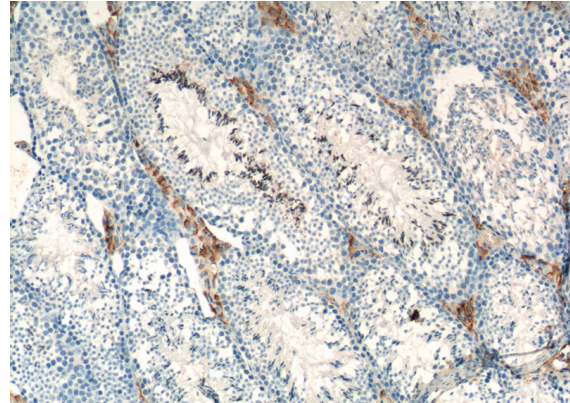
ELISA, IHC

## Dilutions

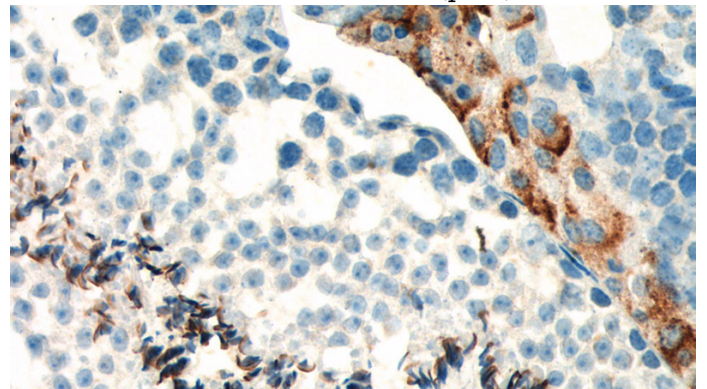
Recommended Dilution:

IHC: 1:20-1:200

## Validations



Immunohistochemistry of paraffin-embedded mouse testis tissue slide using Catalog No:115367 (SLC35A1 Antibody) at dilution of 1:400 (under 10x lens). Heat-mediated antigen retrieval with Tris-EDTA buffer (pH9).



Immunohistochemistry of paraffin-embedded mouse testis tissue slide using Catalog No:115367 (SLC35A1 Antibody) at dilution of 1:400 (under 40x lens). Heat-mediated antigen retrieval with Tris-EDTA buffer (pH9).