

# SLC30A8/ZNT8-Specific antibody



Catalog Number: 115365

## Product name

SLC30A8/ZNT8-Specific antibody

IHC: 1:20-1:200

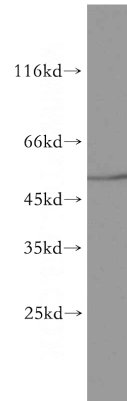
## Specificity

Human, Mouse, Rat; other species not tested.

## Antibody description

SLC30A8/ZNT8-Specific Rabbit Polyclonal antibody. Positive IHC detected in human pancreas tissue, human liver cancer tissue. Positive WB detected in mouse pancreas tissue. Observed molecular weight by Western-blot: 45-50 kDa

## Validations



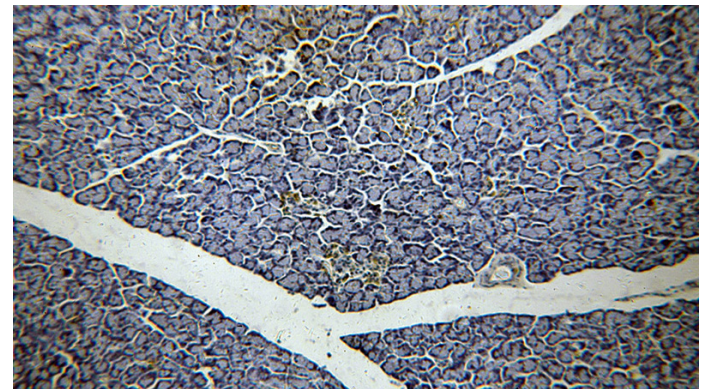
## Preparation

This antibody was obtained by immunization of Peptide (Accession Number: NM\_173851). Purification method: Antigen affinity purified.

mouse pancreas tissue were subjected to SDS PAGE followed by western blot with Catalog No:115365(SLC30A8-Specific antibody) at dilution of 1:500

## Formulation

PBS with 0.02% sodium azide and 50% glycerol pH 7.3.



## Storage

Store at -20°C. DO NOT ALIQUOT

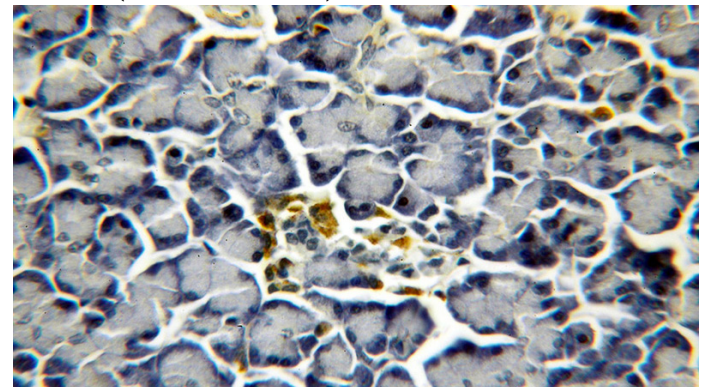
## Clonality

Polyclonal

Immunohistochemical of paraffin-embedded human pancreas using Catalog No:115365(SLC30A8-Specific antibody) at dilution of 1:50 (under 10x lens)

## Ig Type

Rabbit IgG



## Applications

ELISA, WB, IHC

## Dilutions

Recommended Dilution:

WB: 1:200-1:2000

Immunohistochemical of paraffin-embedded human pancreas using Catalog

# SLC30A8/ZNT8-Specific antibody



Catalog Number: 115365

---

No:115365(SLC30A8-Specific antibody) at dilution of 1:50 (under 40x lens)