

SLC27A2 antibody



Catalog Number: 115362

Product name

SLC27A2 antibody

IP: 1:200-1:2000

IHC: 1:20-1:200

Specificity

Human, Mouse, Rat; other species not tested.

IF: 1:10-1:100

Antibody description

SLC27A2 Rabbit Polyclonal antibody. Positive IF detected in HepG2 cells. Positive IHC detected in human liver tissue. Positive WB detected in HepG2 cells. Positive IP detected in HepG2 cells. Observed molecular weight by Western-blot: 70 kDa

Preparation

This antibody was obtained by immunization of SLC27A2 recombinant protein (Accession Number: NM_001159629). Purification method: Antigen affinity purified.

Formulation

PBS with 0.02% sodium azide and 50% glycerol pH 7.3.

Storage

Store at -20°C. DO NOT ALIQUOT

Clonality

Polyclonal

Ig Type

Rabbit IgG

Applications

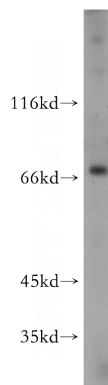
ELISA, WB, IHC, IF, IP

Dilutions

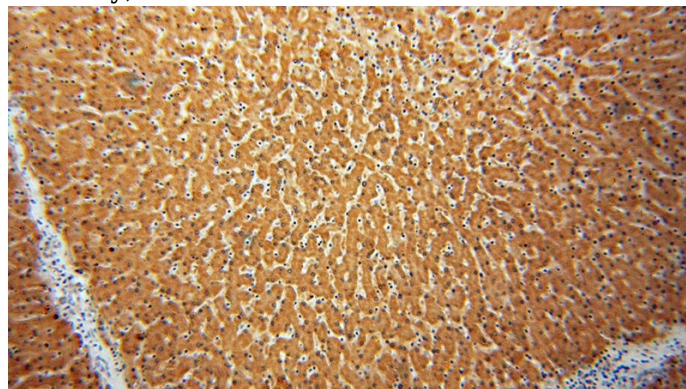
Recommended Dilution:

WB: 1:200-1:2000

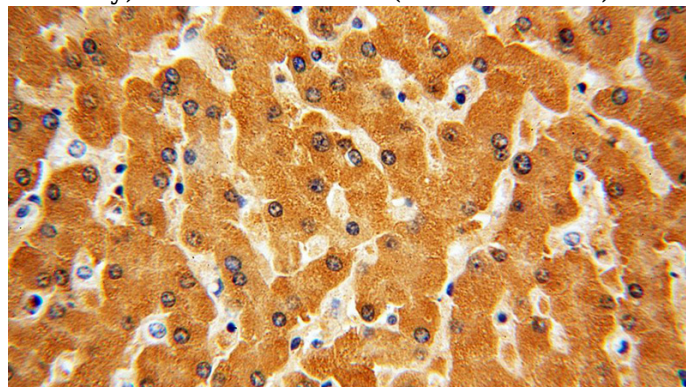
Validations



HepG2 cells were subjected to SDS PAGE followed by western blot with Catalog No:115362(SLC27A2 antibody) at dilution of 1:500



Immunohistochemical of paraffin-embedded human liver using Catalog No:115362(SLC27A2 antibody) at dilution of 1:50 (under 10x lens)



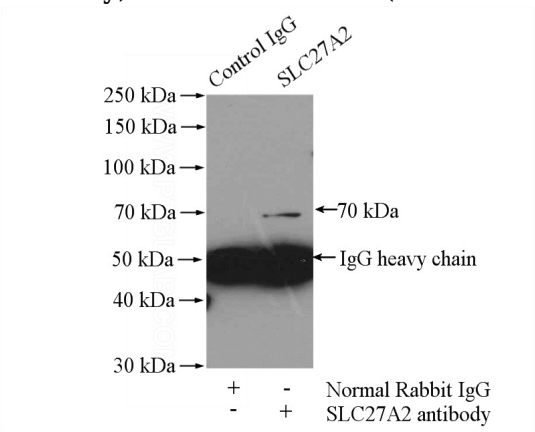
Immunohistochemical of paraffin-embedded

SLC27A2 antibody



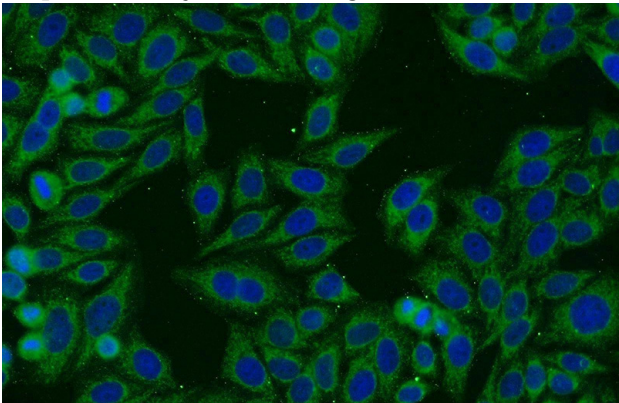
Catalog Number: 115362

human liver using Catalog No:115362(SLC27A2 antibody) at dilution of 1:50 (under 40x lens)



IP Result of anti-SLC27A2 (IP:Catalog No:115362, 4ug; Detection:Catalog No:115362 1:500) with

HepG2 cells lysate 3200ug.



Immunofluorescent analysis of HepG2 cells using Catalog No:115362(SLC27A2 Antibody) at dilution of 1:25 and Alexa Fluor 594-conjugated AffiniPure Goat Anti-Rabbit IgG(H+L)