

SLITRK6 antibody

Catalog Number: 115360

Product name

SLITRK6 antibody

Specificity

Human, Mouse, Rat; other species not tested.

Antibody description

SLITRK6 Rabbit Polyclonal antibody. Positive WB detected in A549 cells, mouse lung tissue. Positive IF detected in HepG2 cells. Positive FC detected in HepG2 cells. Observed molecular weight by Western-blot: 95-100kd

Preparation

This antibody was obtained by immunization of SLITRK6 recombinant protein (Accession Number: NM_032229). Purification method: Antigen affinity purified.

Formulation

PBS with 0.02% sodium azide and 50% glycerol pH 7.3.

Storage

Store at -20°C. DO NOT ALIQUOT

Clonality

Polyclonal

Ig Type

Rabbit IgG

Applications

ELISA, WB, IF, FC

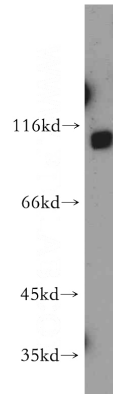
Dilutions

Recommended Dilution:

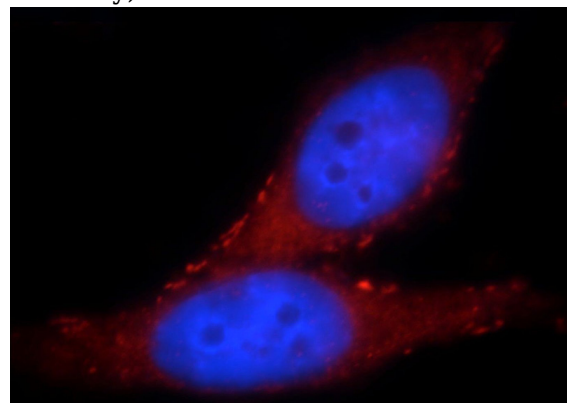
WB: 1:500-1:5000

IF: 1:10-1:100

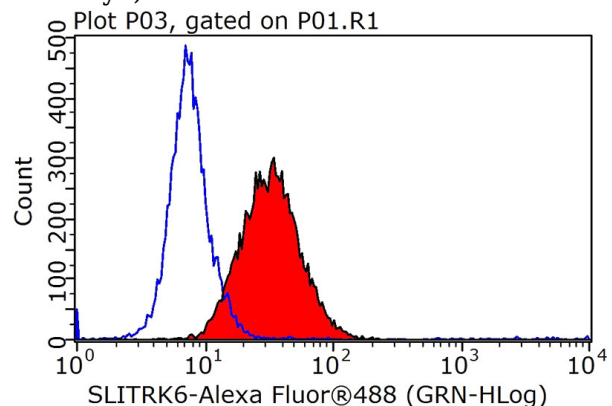
Validations



A549 cells were subjected to SDS PAGE followed by western blot with Catalog No:115360(SLITRK6 antibody) at dilution of 1:500



Immunofluorescent analysis of HepG2 cells, using SLITRK6 antibody Catalog No:115360 at 1:25 dilution and Rhodamine-labeled goat anti-rabbit IgG (red). Blue pseudocolor = DAPI (fluorescent DNA dye).



1X10⁶ HepG2 cells were stained with 0.2ug

SLITRK6 antibody



Catalog Number: 115360

SLITRK6 antibody (Catalog No:115360, red) and control antibody (blue). Fixed with 90% MeOH blocked with 3% BSA (30 min). Alexa Fluor 488-

conjugated AffiniPure Goat Anti-Rabbit IgG(H+L) with dilution 1:1000.