

# SLCO6A1 antibody



Catalog Number: 115354

## Product name

SLCO6A1 antibody

## Specificity

Human, Mouse; other species not tested.

## Antibody description

SLCO6A1 Rabbit Polyclonal antibody. Positive IHC detected in human lung cancer tissue. Positive WB detected in Jurkat cells, HEK-293 cells, mouse brain tissue, mouse testis tissue. Observed molecular weight by Western-blot: 73-80 kDa, 51 kDa

## Preparation

This antibody was obtained by immunization of SLCO6A1 recombinant protein (Accession Number: NM\_001289004). Purification method: Antigen affinity purified.

## Formulation

PBS with 0.1% sodium azide and 50% glycerol pH 7.3.

## Storage

Store at -20°C. DO NOT ALIQUOT

## Clonality

Polyclonal

## Ig Type

Rabbit IgG

## Applications

ELISA, WB, IHC

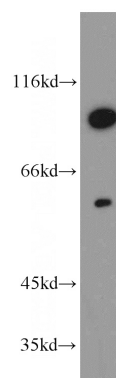
## Dilutions

Recommended Dilution:

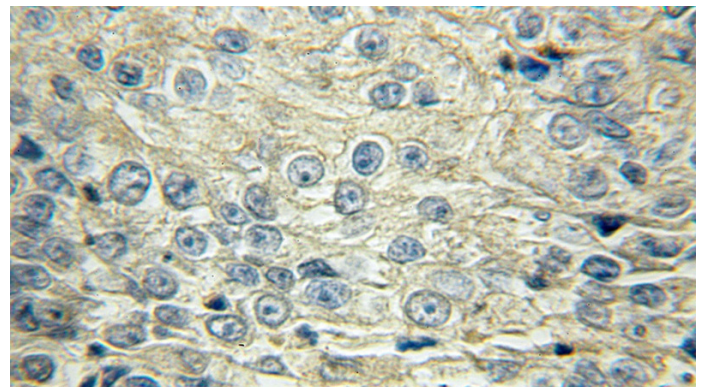
WB: 1:200-1:2000

IHC: 1:20-1:200

## Validations



Jurkat cells were subjected to SDS PAGE followed by western blot with Catalog No:115354(SLCO6A1 antibody) at dilution of 1:500



Immunohistochemical of paraffin-embedded human lung cancer using Catalog No:115354(SLCO6A1 antibody) at dilution of 1:50 (under 10x lens)