

SLC25A6-Specific antibody



Catalog Number: 115339

Product name

SLC25A6-Specific antibody

WB: 1:200-1:2000

IP: 1:200-1:2000

Specificity

Human, Mouse; other species not tested.

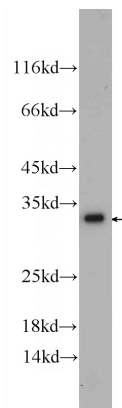
IHC: 1:20-1:200

IF: 1:10-1:100

Antibody description

SLC25A6-Specific Rabbit Polyclonal antibody. Positive WB detected in L02 cells, human heart tissue, human liver tissue. Positive IP detected in mouse liver tissue. Positive IHC detected in human skeletal muscle tissue, human heart tissue, human kidney tissue, human liver tissue. Positive IF detected in HepG2 cells, MCF-7 cells. Observed molecular weight by Western-blot: 33 kDa

Validations



Preparation

This antibody was obtained by immunization of Peptide (Accession Number: NM_001636). Purification method: Antigen affinity purified.

L02 cells were subjected to SDS PAGE followed by western blot with Catalog No:115339(SLC25A6-Specific antibody) at dilution of 1:500

Formulation

PBS with 0.02% sodium azide and 50% glycerol pH 7.3.

Storage

Store at -20°C. DO NOT ALIQUOT

Clonality

Polyclonal

Ig Type

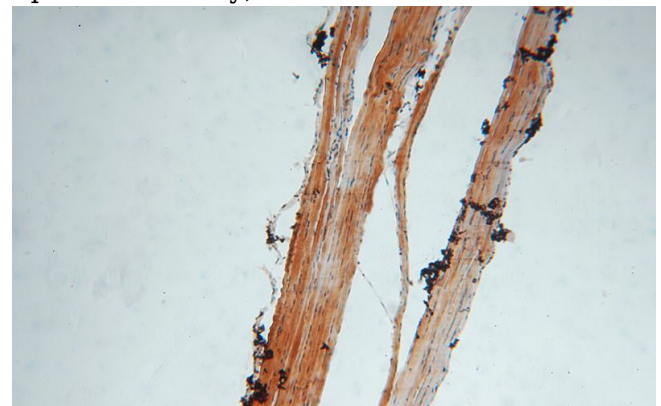
Rabbit IgG

Applications

ELISA, IHC, IF, WB, IP

Dilutions

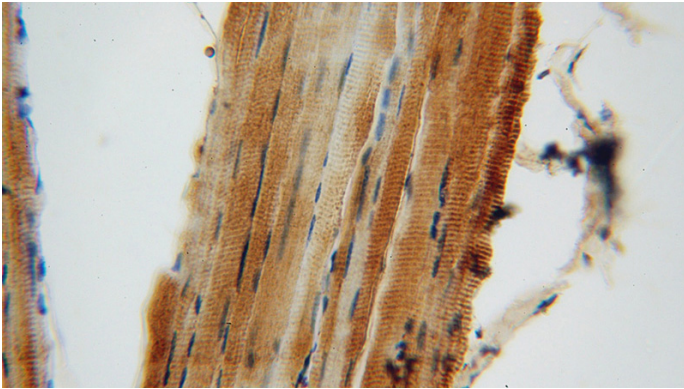
Recommended Dilution:



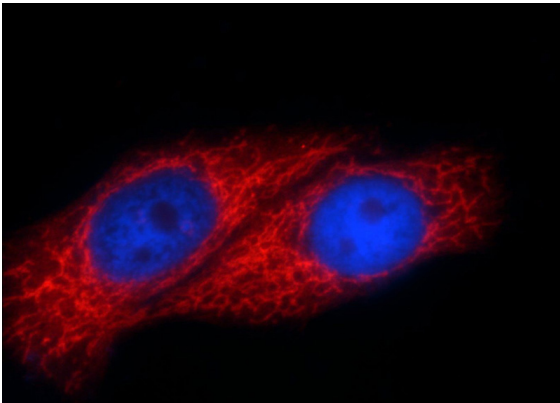
Immunohistochemical of paraffin-embedded human skeletal muscle using Catalog No:115339(SLC25A6-Specific antibody) at dilution of 1:100 (under 10x lens)

SLC25A6-Specific antibody

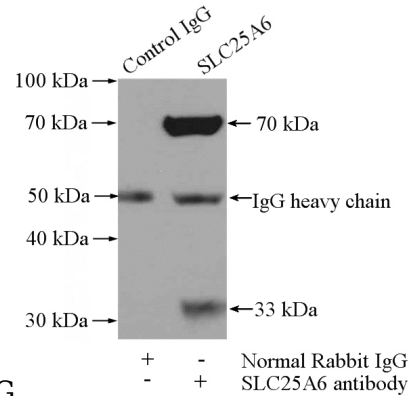
Catalog Number: 115339



Immunohistochemical of paraffin-embedded human skeletal muscle using Catalog No:115339(SLC25A6-Specific antibody) at dilution of 1:100 (under 40x lens)



Immunofluorescent analysis of HepG2 cells using Catalog No:115339(SLC25A6-Specific Antibody) at dilution of 1:25 and Rhodamine-Goat anti-



Rabbit IgG

IP Result of anti-SLC25A6-Specific (IP:Catalog No:115339, 4ug; Detection:Catalog No:115339 1:500) with mouse liver tissue lysate 4000ug.