

SLC25A4 antibody



Catalog Number: 115335

Product name

Polyclonal

SLC25A4 antibody

Ig Type

Specificity

Rabbit IgG

human, mouse, rat; other species not tested.

Applications

Antibody description

ELISA, WB

SLC25A4 Rabbit Polyclonal antibody. Positive WB detected in human heart tissue, mouse brain tissue, mouse skeletal muscle tissue. Observed molecular weight by Western-blot: 33kd

Dilutions

Recommended Dilution:

WB: 1:200-1:2000

Preparation

This antibody was obtained by immunization of SLC25A4 recombinant protein (Accession Number: NM_001151). Purification method: Antigen affinity purified.

Validations

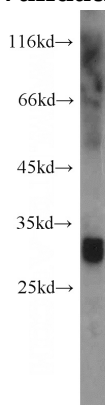
Formulation

PBS with 0.02% sodium azide and 50% glycerol pH 7.3.

Storage

Store at -20°C. DO NOT ALIQUOT

Clonality



human heart tissue were subjected to SDS PAGE followed by western blot with Catalog No:115335(SLC25A4 antibody) at dilution of 1:800