

SLC25A20 antibody



Catalog Number: 115327

Product name

SLC25A20 antibody

IHC: 1:20-1:200

IF: 1:10-1:100

Specificity

human, mouse, rat; other species not tested.

Validations



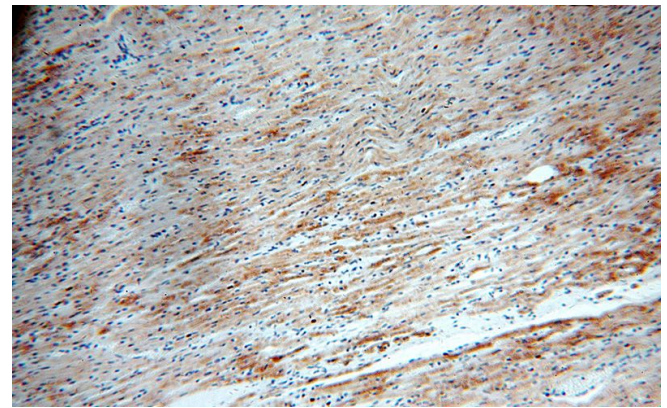
Antibody description

SLC25A20 Rabbit Polyclonal antibody. Positive IHC detected in human heart. Positive IF detected in Hela. Positive WB detected in mouse heart tissue, HEK-293 cells. Observed molecular weight by Western-blot: 33kd

mouse heart tissue were subjected to SDS PAGE followed by western blot with Catalog No:115327(SLC25A20 antibody) at dilution of 1:500

Preparation

This antibody was obtained by immunization of SLC25A20 recombinant protein (Accession Number: NM_000387). Purification method: Antigen affinity purified.



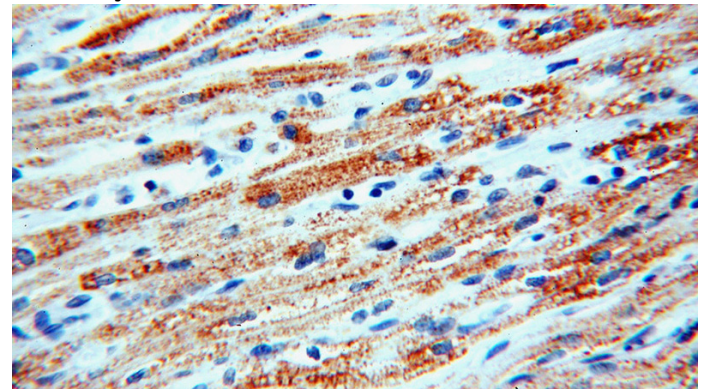
Formulation

PBS with 0.02% sodium azide and 50% glycerol pH 7.3.

Immunohistochemical of paraffin-embedded human heart using Catalog No:115327(SLC25A20 antibody) at dilution of 1:100 (under 10x lens)

Storage

Store at -20°C. DO NOT ALIQUOT



Clonality

Polyclonal

Ig Type

Rabbit IgG

Applications

ELISA, WB, IHC, IF

Immunohistochemical of paraffin-embedded human heart using Catalog No:115327(SLC25A20 antibody) at dilution of 1:100 (under 40x lens)

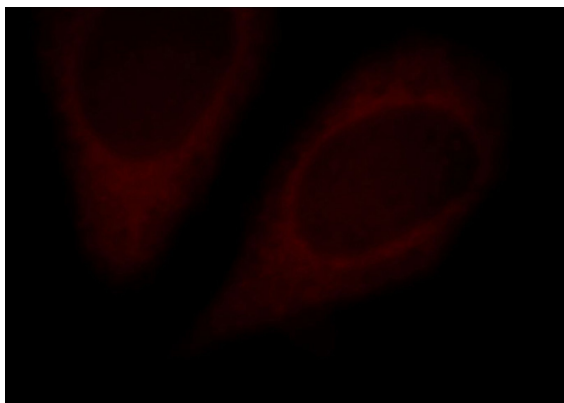
Dilutions

Recommended Dilution:

WB: 1:1000-1:10000

SLC25A20 antibody

Catalog Number: 115327



Immunofluorescent analysis of HeLa cells, using SLC25A20 antibody Catalog No:115327 at 1:25 dilution and Rhodamine-labeled goat anti-rabbit IgG (red).