

SLC25A2 antibody



Catalog Number: 115326

Product name

SLC25A2 antibody

WB: 1:500-1:5000

IHC: 1:20-1:200

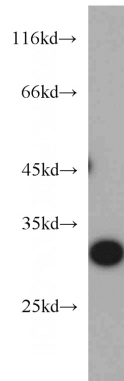
Specificity

Human, Mouse, Rat; other species not tested.

Antibody description

SLC25A2 Rabbit Polyclonal antibody. Positive WB detected in mouse kidney tissue, HeLa cells, mouse liver tissue. Positive IHC detected in human liver tissue, human kidney tissue. Observed molecular weight by Western-blot: 30-33 kDa

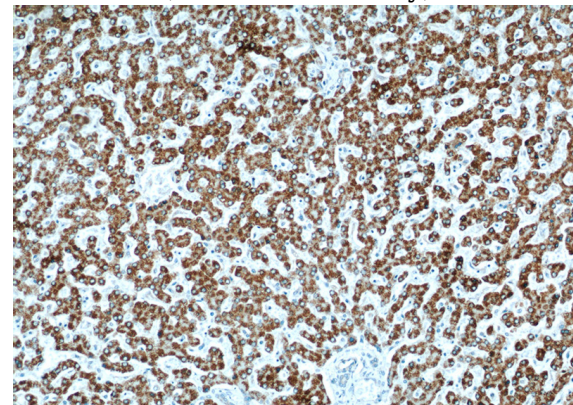
Validations



mouse kidney tissue were subjected to SDS PAGE followed by western blot with Catalog No:115326(SLC25A2 antibody) at dilution of 1:500

Preparation

This antibody was obtained by immunization of SLC25A2 recombinant protein (Accession Number: NM_031947). Purification method: Antigen affinity purified.



Formulation

PBS with 0.02% sodium azide and 50% glycerol pH 7.3.

Storage

Store at -20°C. DO NOT ALIQUOT

Clonality

Polyclonal

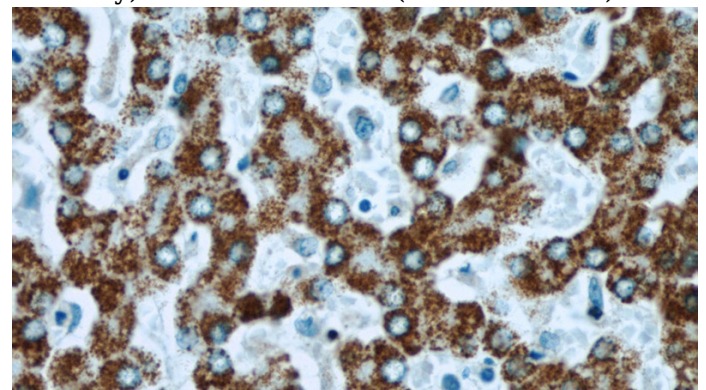
Ig Type

Rabbit IgG

Applications

ELISA, WB, IHC

Immunohistochemical of paraffin-embedded human liver using Catalog No:115326(SLC25A2 antibody) at dilution of 1:50 (under 10x lens)



Dilutions

Recommended Dilution:

Immunohistochemical of paraffin-embedded human liver using Catalog No:115326(SLC25A2 antibody) at dilution of 1:50 (under 40x lens)