

SLC25A15 antibody



Catalog Number: 115324

Product name

SLC25A15 antibody

IHC: 1:20-1:200

Specificity

human, mouse, rat; other species not tested.

Antibody description

SLC25A15 Rabbit Polyclonal antibody. Positive WB detected in HeLa cells, mouse liver tissue, mouse stomach tissue. Positive IHC detected in human heart. Observed molecular weight by Western-blot: 30-33 kDa

Preparation

This antibody was obtained by immunization of SLC25A15 recombinant protein (Accession Number: NM_014252). Purification method: Antigen affinity purified.

Formulation

PBS with 0.02% sodium azide and 50% glycerol pH 7.3.

Storage

Store at -20°C. DO NOT ALIQUOT

Clonality

Polyclonal

Ig Type

Rabbit IgG

Applications

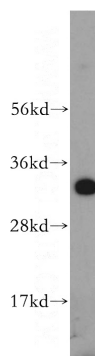
ELISA, WB, IHC

Dilutions

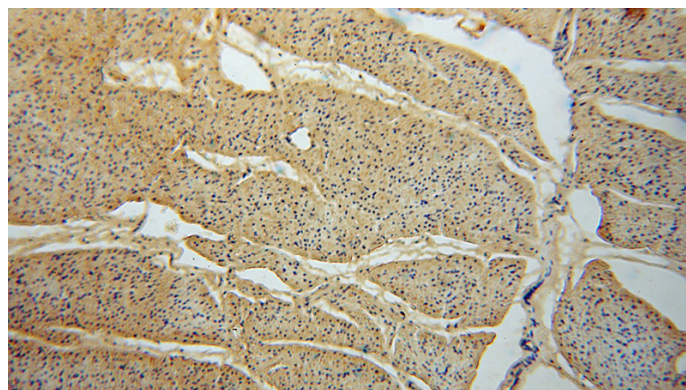
Recommended Dilution:

WB: 1:200-1:2000

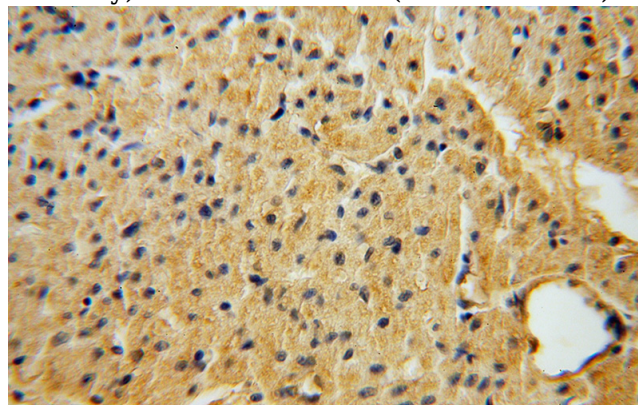
Validations



HeLa cells were subjected to SDS PAGE followed by western blot with Catalog No:115324(SLC25A15 antibody) at dilution of 1:500



Immunohistochemical of paraffin-embedded human heart using Catalog No:115324(SLC25A15 antibody) at dilution of 1:50 (under 10x lens)



Immunohistochemical of paraffin-embedded human heart using Catalog No:115324(SLC25A15 antibody) at dilution of 1:50 (under 40x lens)