

SLC25A13 antibody

Catalog Number: 115323

Product name

SLC25A13 antibody

WB: 1:200-1:2000

IP: 1:500-1:5000

Specificity

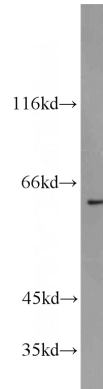
Human, Mouse, Rat; other species not tested.

IHC: 1:20-1:200

Antibody description

SLC25A13 Rabbit Polyclonal antibody. Positive IP detected in mouse kidney tissue. Positive WB detected in Raji cells, A431 cells, HEK-293 cells, mouse kidney tissue, mouse liver tissue. Positive IHC detected in human colon cancer tissue. Observed molecular weight by Western-blot: 60-63kd

Validations



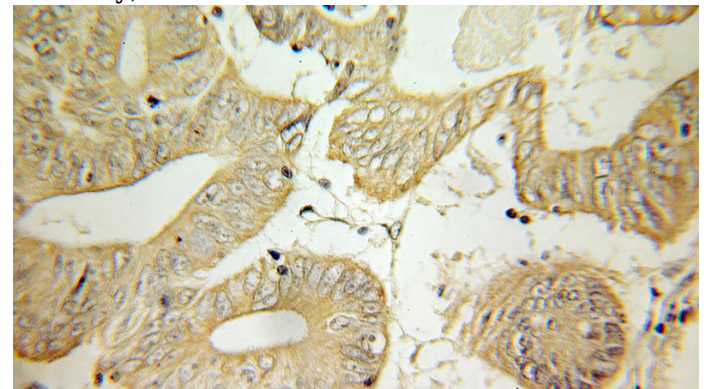
Preparation

This antibody was obtained by immunization of SLC25A13 recombinant protein (Accession Number: NM_014251). Purification method: Antigen affinity purified.

Raji cells were subjected to SDS PAGE followed by western blot with Catalog No:115323(SLC25A13 antibody) at dilution of 1:800

Formulation

PBS with 0.1% sodium azide and 50% glycerol pH 7.3.



Storage

Store at -20°C. DO NOT ALIQUOT

Clonality

Polyclonal

Ig Type

Rabbit IgG

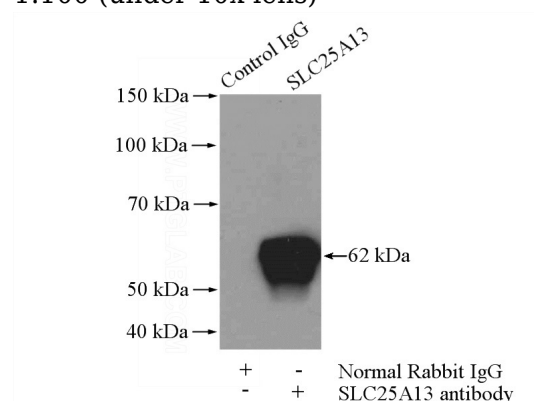
Applications

ELISA, WB, IHC, IP

Dilutions

Recommended Dilution:

Immunohistochemical of paraffin-embedded human colon cancer using Catalog No:115323(SLC25A13 antibody) at dilution of 1:100 (under 10x lens)



SLC25A13 antibody



Catalog Number: 115323

IP Result of anti-SLC25A13 (IP:Catalog

No:115323, 4ug; Detection:Catalog No:115323
1:1000) with mouse kidney tissue lysate 4000ug.