

SLC25A11 antibody



Catalog Number: 115322

Product name

SLC25A11 antibody

Specificity

Human; other species not tested.

Antibody description

SLC25A11 Rabbit Polyclonal antibody. Positive IP detected in HEK-293 cells. Positive WB detected in HEK-293 cells, human kidney tissue. Observed molecular weight by Western-blot: 30-34 kDa

Preparation

This antibody was obtained by immunization of SLC25A11 recombinant protein (Accession Number: NM_003562). Purification method: Antigen affinity purified.

Formulation

PBS with 0.1% sodium azide and 50% glycerol pH 7.3.

Storage

Store at -20°C. DO NOT ALIQUOT

Clonality

Polyclonal

Ig Type

Rabbit IgG

Applications

ELISA, WB, IP

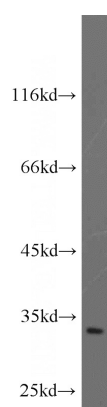
Dilutions

Recommended Dilution:

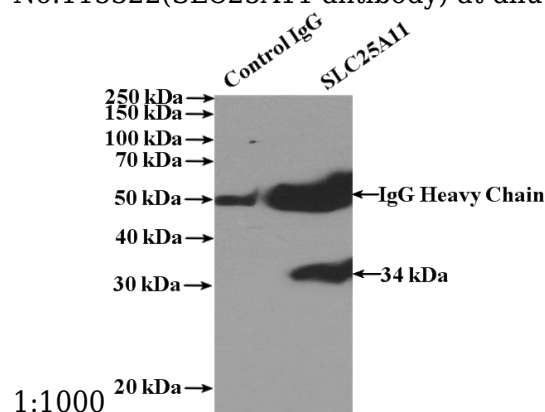
WB: 1:500-1:5000

IP: 1:500-1:5000

Validations



HEK-293 cells were subjected to SDS PAGE followed by western blot with Catalog No:115322(SLC25A11 antibody) at dilution of



IP Result of anti-SLC25A11 (IP:Catalog No:115322, 4ug; Detection:Catalog No:115322 1:1000) with HEK-293 cells lysate 1560ug.