

SLC25A1 antibody



Catalog Number: 115320

Product name

SLC25A1 antibody

WB: 1:500-1:5000

IP: 1:200-1:2000

Specificity

Human, Mouse, Rat; other species not tested.

IHC: 1:20-1:200

IF: 1:20-1:200

Antibody description

SLC25A1 Rabbit Polyclonal antibody. Positive IP detected in HeLa cells. Positive WB detected in HeLa cells, HepG2 cells, rat liver tissue. Positive IF detected in HepG2 cells. Positive IHC detected in human kidney tissue, human breast cancer tissue. Observed molecular weight by Western-blot: 34 kDa

Preparation

This antibody was obtained by immunization of SLC25A1 recombinant protein (Accession Number: NM_005984). Purification method: Antigen affinity purified.

Formulation

PBS with 0.02% sodium azide and 50% glycerol pH 7.3.

Storage

Store at -20°C. DO NOT ALIQUOT

Clonality

Polyclonal

Ig Type

Rabbit IgG

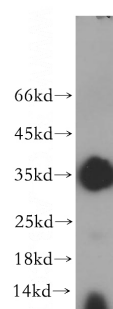
Applications

ELISA, WB, IHC, IF, IP

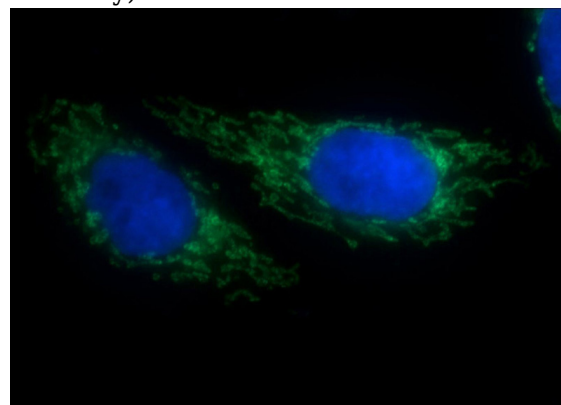
Dilutions

Recommended Dilution:

Validations



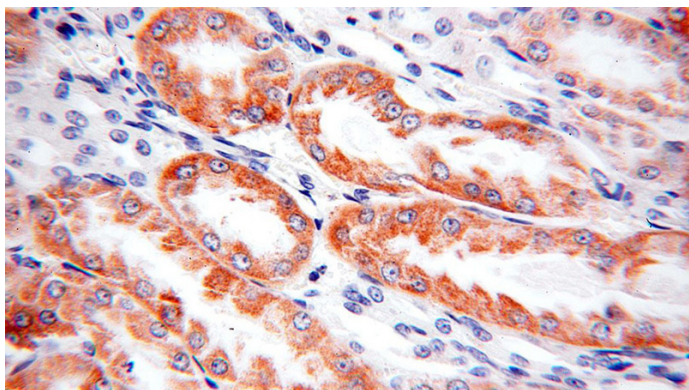
HeLa cells were subjected to SDS PAGE followed by western blot with Catalog No:115320(SLC25A1 antibody) at dilution of 1:400



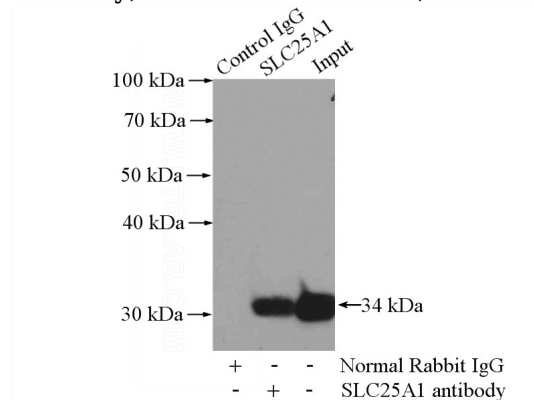
Immunofluorescent analysis of HepG2 cells using Catalog No:115320 (SLC25A1 Antibody) at dilution of 1:50 and Alexa Fluor 488-conjugated AffiniPure Goat Anti-Rabbit IgG(H+L)

SLC25A1 antibody

Catalog Number: 115320



Immunohistochemical of paraffin-embedded human kidney using Catalog No:115320(SLC25A1 antibody) at dilution of 1:100 (under 10x lens)



IP Result of anti-SLC25A1 (IP:Catalog No:115320, 2ug; Detection:Catalog No:115320 1:500) with HeLa cells lysate 2000ug.

