

SLC22A23 antibody



Catalog Number: 115317

Product name

SLC22A23 antibody

Specificity

Human, Mouse, Rat; other species not tested.

Antibody description

SLC22A23 Rabbit Polyclonal antibody. Positive WB detected in L02 cells, mouse kidney tissue, mouse liver tissue, rat liver tissue. Positive IP detected in mouse liver tissue. Observed molecular weight by Western-blot: 66-74 kDa

Preparation

This antibody was obtained by immunization of SLC22A23 recombinant protein (Accession Number: NM_001286455). Purification method: Antigen affinity purified.

Formulation

PBS with 0.1% sodium azide and 50% glycerol pH 7.3.

Storage

Store at -20°C. DO NOT ALIQUOT

Clonality

Polyclonal

Ig Type

Rabbit IgG

Applications

ELISA, WB, IP

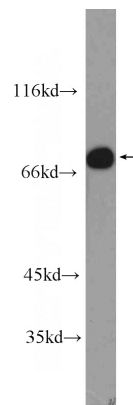
Dilutions

Recommended Dilution:

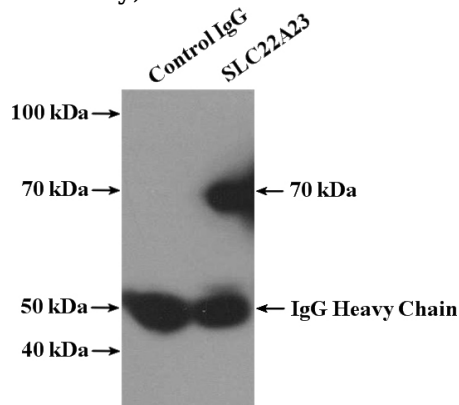
WB: 1:500-1:5000

IP: 1:500-1:5000

Validations



L02 cells were subjected to SDS PAGE followed by western blot with Catalog No:115317(SLC22A23 Antibody) at dilution of 1:1500



IP Result of anti-SLC22A23 (IP:Catalog No:115317, 4ug; Detection:Catalog No:115317 1:1000) with mouse liver tissue lysate 4000ug.