

SLC22A1 antibody



Catalog Number: 115312

Product name

SLC22A1 antibody

Specificity

Human, Mouse, Rat; other species not tested.

Antibody description

SLC22A1 Rabbit Polyclonal antibody. Positive WB detected in mouse liver tissue. Positive IP detected in mouse liver tissue. Observed molecular weight by Western-blot: 61-67 kDa

Preparation

This antibody was obtained by immunization of SLC22A1 recombinant protein (Accession Number: NM_003057). Purification method: Antigen affinity purified.

Formulation

PBS with 0.1% sodium azide and 50% glycerol pH 7.3.

Storage

Store at -20°C. DO NOT ALIQUOT

Clonality

Polyclonal

Ig Type

Rabbit IgG

Applications

ELISA, WB, IP

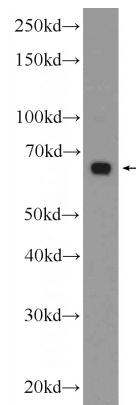
Dilutions

Recommended Dilution:

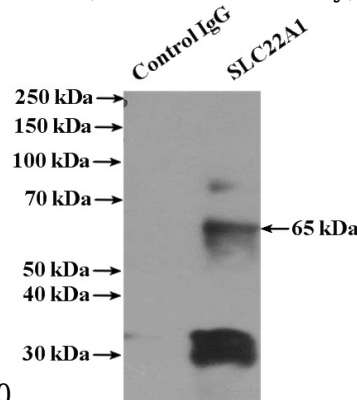
WB: 1:200-1:2000

IP: 1:500-1:5000

Validations



mouse liver tissue were subjected to SDS PAGE followed by western blot with Catalog No:115312(SLC22A1 Antibody) at dilution of



1:600

IP Result of anti-SLC22A1 (IP:Catalog No:115312, 4ug; Detection:Catalog No:115312 1:1000) with mouse liver tissue lysate 4000ug.