

SLC20A1 antibody



Catalog Number: 115310

Product name

SLC20A1 antibody

IP: 1:200-1:2000

IHC: 1:20-1:200

Specificity

Human, Mouse, Rat; other species not tested.

Antibody description

SLC20A1 Rabbit Polyclonal antibody. Positive IP detected in HEK-293 cells. Positive WB detected in HEK-293 cells, HeLa cells, human kidney tissue, Jurkat cells, K-562 cells. Positive IHC detected in human lymphoma tissue. Observed molecular weight by Western-blot: 85 kDa

Preparation

This antibody was obtained by immunization of SLC20A1 recombinant protein (Accession Number: NM_005415). Purification method: Antigen affinity purified.

Formulation

PBS with 0.02% sodium azide and 50% glycerol pH 7.3.

Storage

Store at -20°C. DO NOT ALIQUOT

Clonality

Polyclonal

Ig Type

Rabbit IgG

Applications

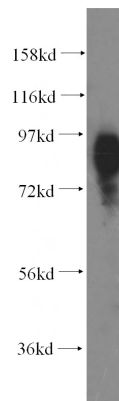
ELISA, WB, IHC, IP

Dilutions

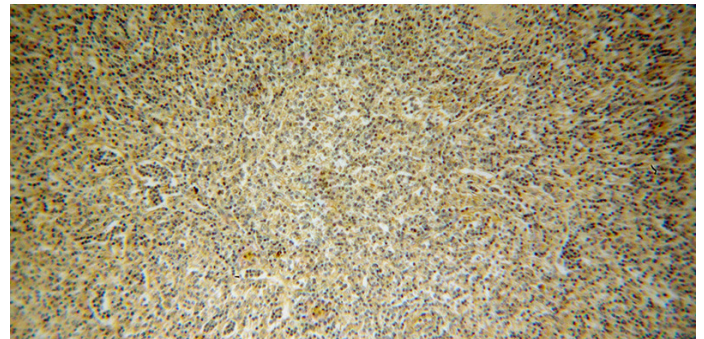
Recommended Dilution:

WB: 1:200-1:2000

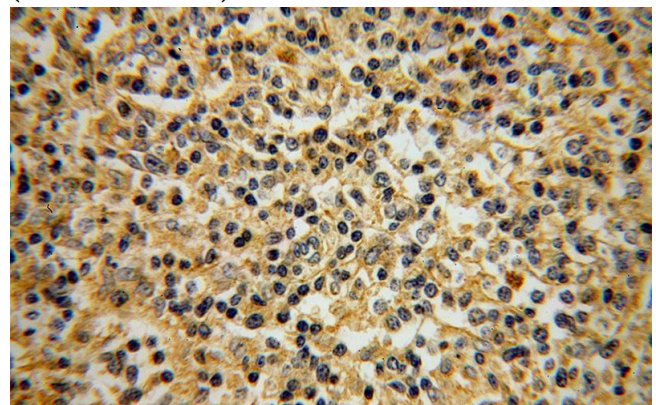
Validations



HEK-293 cells were subjected to SDS PAGE followed by western blot with Catalog No:115310(SLC20A1 antibody) at dilution of 1:500



Immunohistochemical of paraffin-embedded human lymphoma using Catalog No:115310(SLC20A1 antibody) at dilution of 1:50 (under 10x lens)



Immunohistochemical of paraffin-embedded

SLC20A1 antibody

Catalog Number: 115310

human lymphoma using Catalog No:115310(SLC20A1 antibody) at dilution of 1:50 (under 40x lens)

IP Result of anti-SLC20A1 (IP:Catalog No:115310, 4ug; Detection:Catalog No:115310 1:500) with HEK-293 cells lysate 2800ug.

