

SLC1A4 antibody

Catalog Number: 115309

Product name

SLC1A4 antibody

Specificity

Human, Mouse, Rat; other species not tested.

Antibody description

SLC1A4 Rabbit Polyclonal antibody. Positive WB detected in mouse skeletal muscle tissue, human skeletal muscle tissue, mouse brain tissue. Positive IP detected in mouse brain tissue. Observed molecular weight by Western-blot: 62-70 kDa

Preparation

This antibody was obtained by immunization of SLC1A4 recombinant protein (Accession Number: NM_003038). Purification method: Antigen affinity purified.

Formulation

PBS with 0.02% sodium azide and 50% glycerol pH 7.3.

Storage

Store at -20°C. DO NOT ALIQUOT

Clonality

Polyclonal

Ig Type

Rabbit IgG

Applications

ELISA, IP, WB

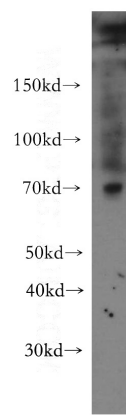
Dilutions

Recommended Dilution:

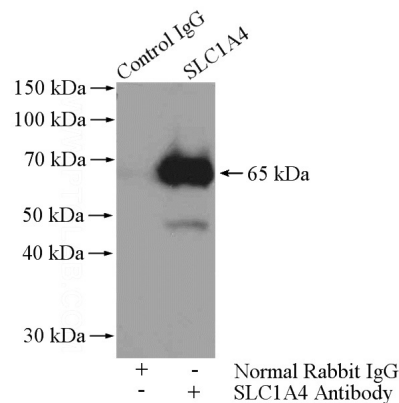
WB: 1:200-1:2000

IP: 1:500-1:5000

Validations



mouse skeletal muscle tissue were subjected to SDS PAGE followed by western blot with Catalog No:115309(SLC1A4 antibody) at dilution of 1:500



IP Result of anti-SLC1A4 (IP:Catalog No:115309, 4ug; Detection:Catalog No:115309 1:1000) with mouse brain tissue lysate 4000ug.