

SLC19A3 antibody



Catalog Number: 115308

Product name

SLC19A3 antibody

Specificity

Human, Mouse, Rat; other species not tested.

Antibody description

SLC19A3 Rabbit Polyclonal antibody. Positive IP detected in mouse liver tissue. Positive WB detected in mouse liver tissue, human placenta tissue, mouse kidney tissue, mouse skeletal muscle tissue, rat heart tissue, SH-SY5Y cells. Observed molecular weight by Western-blot: 63-66kd

Preparation

This antibody was obtained by immunization of SLC19A3 recombinant protein (Accession Number: NM_001371412). Purification method: Antigen affinity purified.

Formulation

PBS with 0.02% sodium azide and 50% glycerol pH 7.3.

Storage

Store at -20°C. DO NOT ALIQUOT

Clonality

Polyclonal

Ig Type

Rabbit IgG

Applications

ELISA, WB, IP

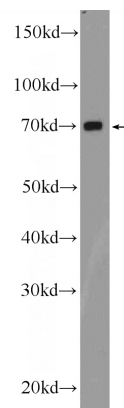
Dilutions

Recommended Dilution:

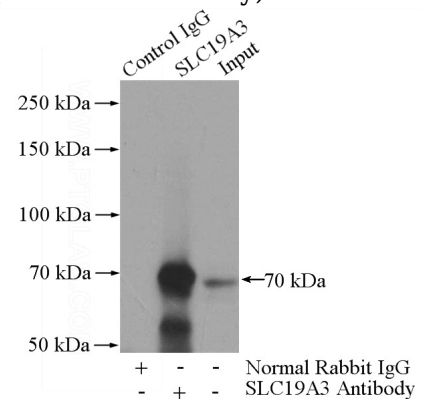
WB: 1:200-1:2000

IP: 1:200-1:2000

Validations



mouse liver tissue were subjected to SDS PAGE followed by western blot with Catalog No:115308(SLC19A3 Antibody) at dilution of



1:600

IP Result of anti-SLC19A3 (IP:Catalog No:115308, 4ug; Detection:Catalog No:115308 1:600) with mouse liver tissue lysate 4000ug.