

SLC18A1 antibody



Catalog Number: 115307

Product name

SLC18A1 antibody

Recommended Dilution:

WB: 1:500-1:5000

Immunogen

IHC: 1:20-1:200

[Human SLC18A1 Recombinant protein \(GST tag\)](#)

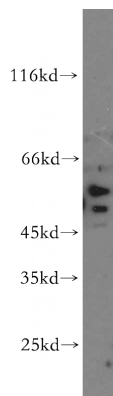
Validations

Specificity

Human; other species not tested.

Antibody description

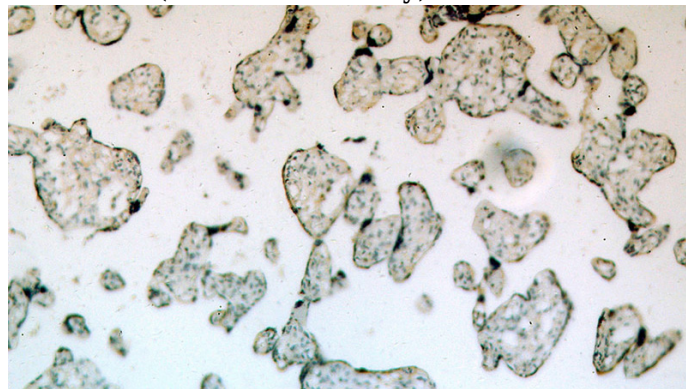
SLC18A1 Rabbit Polyclonal antibody. Positive WB detected in HEK-293 cells, A549 cells, C6 cells, HeLa cells, HepG2 cells. Positive IHC detected in human placenta tissue. Observed molecular weight by Western-blot: 50 kDa, 56 kDa



Preparation

This antibody was obtained by immunization of SLC18A1 recombinant protein (Accession Number: BC009387). Purification method: Antigen affinity purified.

HEK-293 cells were subjected to SDS PAGE followed by western blot with Catalog No:115307(SLC18A1 antibody) at dilution of 1:500



Formulation

PBS with 0.02% sodium azide and 50% glycerol pH 7.3.

Storage

Store at -20°C. DO NOT ALIQUOT

Immunohistochemical of paraffin-embedded human placenta using Catalog No:115307(SLC18A1 antibody) at dilution of 1:100 (under 10x lens)

Clonality

Polyclonal

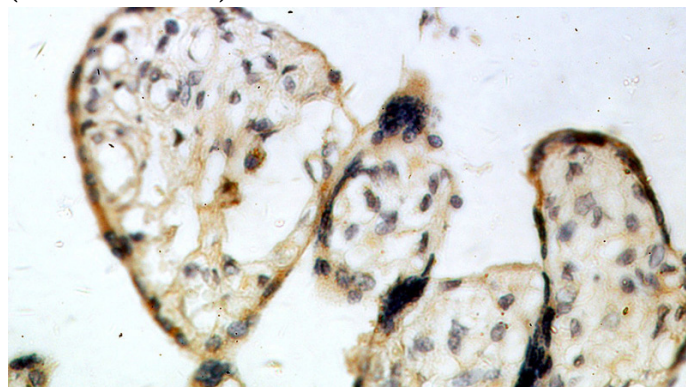
Ig Type

Rabbit IgG

Applications

ELISA, WB, IHC

Dilutions



SLC18A1 antibody



Catalog Number: 115307

Immunohistochemical of paraffin-embedded
human placenta using Catalog

No:115307(SLC18A1 antibody) at dilution of 1:100
(under 40x lens)