

SLC13A2 antibody



Catalog Number: 115301

Product name

SLC13A2 antibody

Specificity

Human, Mouse, Rat; other species not tested.

Antibody description

SLC13A2 Rabbit Polyclonal antibody. Positive IHC detected in human kidney tissue. Positive IP detected in mouse kidney tissue.

Preparation

This antibody was obtained by immunization of SLC13A2 recombinant protein (Accession Number: NM_003984). Purification method: Antigen affinity purified.

Formulation

PBS with 0.02% sodium azide and 50% glycerol pH 7.3.

Storage

Store at -20°C. DO NOT ALIQUOT

Clonality

Polyclonal

Ig Type

Rabbit IgG

Applications

ELISA, IP, IHC

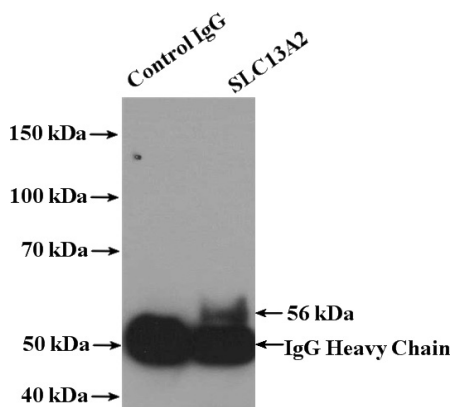
Dilutions

Recommended Dilution:

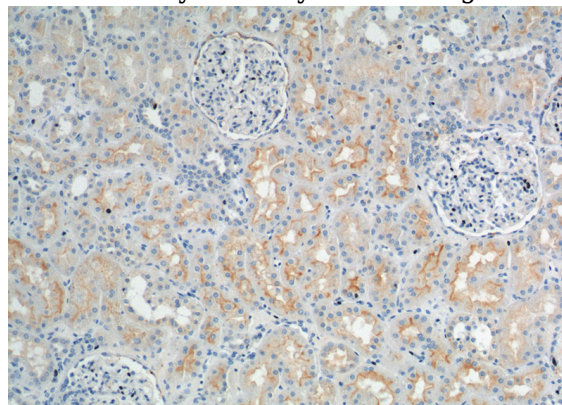
IP: 1:200-1:1000

IHC: 1:20-1:200

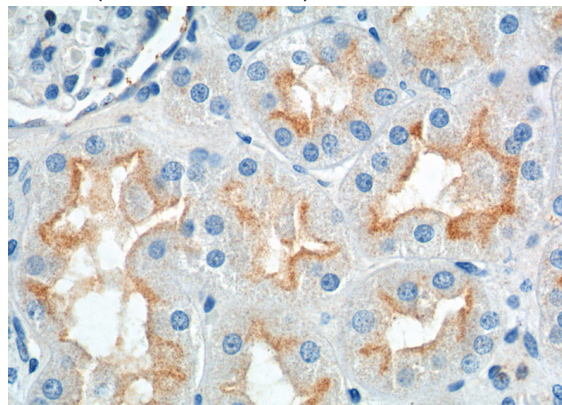
Validations



IP Result of anti-SLC13A2 (IP: Catalog No: 115301, 4ug; Detection: Catalog No: 115301 1:300) with mouse kidney tissue lysate 4000ug.



Immunohistochemistry of paraffin-embedded human kidney tissue slide using Catalog No: 115301 (SLC13A2 Antibody) at dilution of 1:200 (under 10x lens).



Immunohistochemistry of paraffin-embedded human kidney tissue slide using Catalog No: 115301 (SLC13A2 Antibody) at dilution of 1:200 (under 40x lens).