

SLC10A3 antibody



Catalog Number: 115297

Product name

SLC10A3 antibody

IHC: 1:20-1:200

IF: 1:10-1:100

Specificity

Human, Mouse; other species not tested.

Antibody description

SLC10A3 Rabbit Polyclonal antibody. Positive WB detected in mouse liver tissue, RAW264.7 cells. Positive IF detected in Hela cells. Positive IHC detected in human pancreas tissue. Observed molecular weight by Western-blot: 50kd,44kd

Preparation

This antibody was obtained by immunization of SLC10A3 recombinant protein (Accession Number: NM_001142391). Purification method: Antigen affinity purified.

Formulation

PBS with 0.02% sodium azide and 50% glycerol pH 7.3.

Storage

Store at -20°C. DO NOT ALIQUOT

Clonality

Polyclonal

Ig Type

Rabbit IgG

Applications

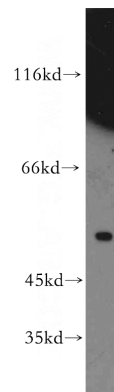
ELISA, WB, IHC, IF

Dilutions

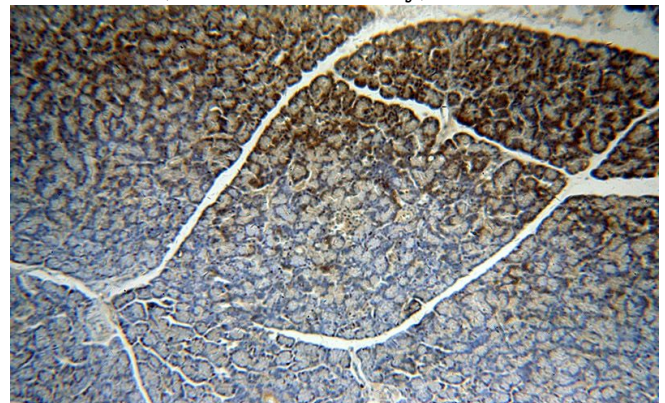
Recommended Dilution:

WB: 1:200-1:2000

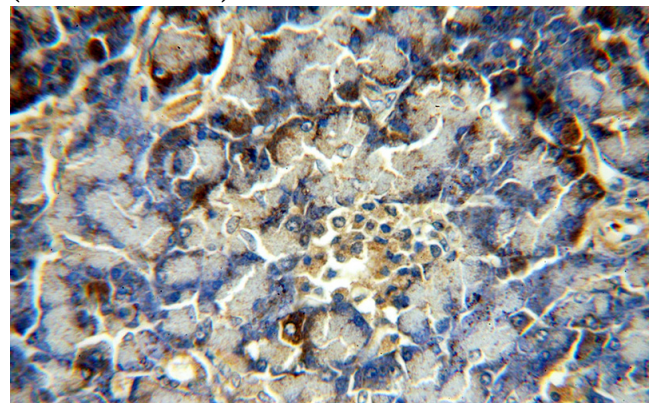
Validations



mouse liver tissue were subjected to SDS PAGE followed by western blot with Catalog No:115297(SLC10A3 antibody) at dilution of 1:500



Immunohistochemical of paraffin-embedded human pancreas using Catalog No:115297(SLC10A3 antibody) at dilution of 1:50 (under 10x lens)



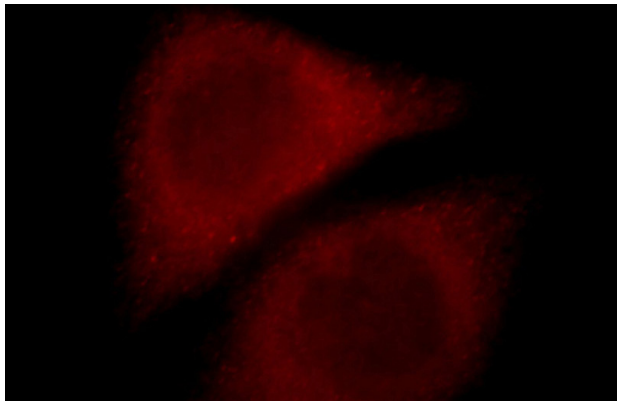
Immunohistochemical of paraffin-embedded

SLC10A3 antibody



Catalog Number: 115297

human pancreas using Catalog
No:115297(SLC10A3 antibody) at dilution of 1:50
(under 40x lens)



Immunofluorescent analysis of Hela cells, using
SLC10A3 antibody Catalog No:115297 at 1:25
dilution and Rhodamine-labeled goat anti-rabbit
IgG (red).