

SLA/LP antibody

Catalog Number: 115291

Product name

SLA/LP antibody

Specificity

Human, Mouse, Rat; other species not tested.

Antibody description

SLA/LP Rabbit Polyclonal antibody. Positive WB detected in HeLa cells, human kidney tissue, human lung tissue. Positive IP detected in mouse liver tissue. Observed molecular weight by Western-blot: 56 kDa

Preparation

This antibody was obtained by immunization of SLA/LP recombinant protein (Accession Number: BC023539). Purification method: Antigen affinity purified.

Formulation

PBS with 0.1% sodium azide and 50% glycerol pH 7.3.

Storage

Store at -20°C. DO NOT ALIQUOT

Clonality

Polyclonal

Ig Type

Rabbit IgG

Applications

ELISA, WB, IP

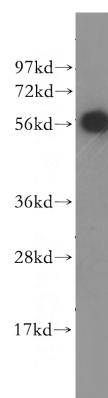
Dilutions

Recommended Dilution:

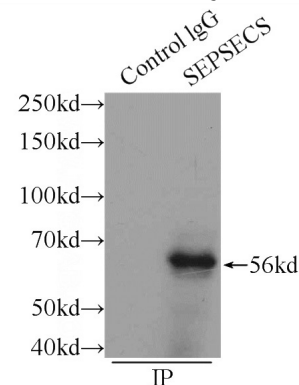
WB: 1:500-1:5000

IP: 1:200-1:2000

Validations



HeLa cells were subjected to SDS PAGE followed by western blot with Catalog No:115291 (SEPSECS antibody) at dilution of



1:400

IP Result of anti-SEPSECS (IP:Catalog No:115291, 3ug; Detection:Catalog No:115291 1:800) with mouse liver tissue lysate 6000ug.