

SHPK antibody



Catalog Number: 115281

Product name

SHPK antibody

Specificity

human, mouse, rat; other species not tested.

Antibody description

SHPK Rabbit Polyclonal antibody. Positive IHC detected in human prostate cancer. Positive WB detected in HEK-293 cells, human heart tissue. Observed molecular weight by Western-blot: 52kd

Preparation

This antibody was obtained by immunization of SHPK recombinant protein (Accession Number: NM_013276). Purification method: Antigen affinity purified.

Formulation

PBS with 0.1% sodium azide and 50% glycerol pH 7.3.

Storage

Store at -20°C. DO NOT ALIQUOT

Clonality

Polyclonal

Ig Type

Rabbit IgG

Applications

ELISA, WB, IHC

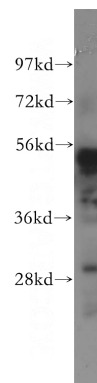
Dilutions

Recommended Dilution:

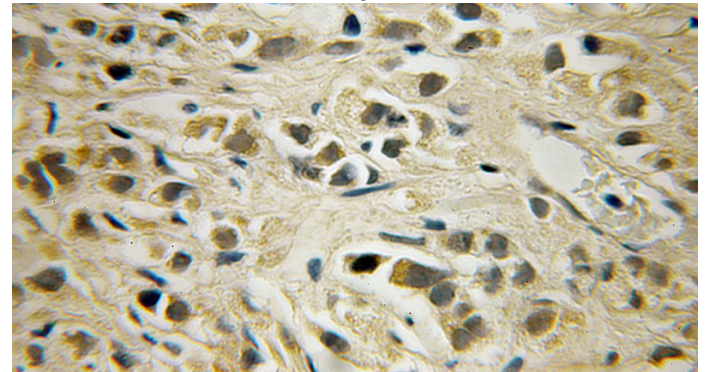
WB: 1:500-1:5000

IHC: 1:20-1:200

Validations



HEK-293 cells were subjected to SDS PAGE followed by western blot with Catalog No:115281(SHPK antibody) at dilution of 1:500



Immunohistochemical of paraffin-embedded human prostate cancer using Catalog No:115281(SHPK antibody) at dilution of 1:50 (under 10x lens)