

# SHMT2 antibody



Catalog Number: 115277

## Product name

SHMT2 antibody

IHC: 1:20-1:200

IF: 1:20-1:200

## Specificity

Human, Mouse, Rat; other species not tested.

## Antibody description

SHMT2 Rabbit Polyclonal antibody. Positive IF detected in MCF-7 cells. Positive IHC detected in human cervical cancer tissue, human heart tissue. Positive WB detected in HeLa cells, HEK-293 cells, MCF7 cells, mouse kidney tissue. Observed molecular weight by Western-blot: 55 kDa

## Preparation

This antibody was obtained by immunization of SHMT2 recombinant protein (Accession Number: NM\_005412). Purification method: Antigen affinity purified.

## Formulation

PBS with 0.1% sodium azide and 50% glycerol pH 7.3.

## Storage

Store at -20°C. DO NOT ALIQUOT

## Clonality

Polyclonal

## Ig Type

Rabbit IgG

## Applications

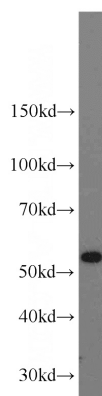
ELISA, WB, IHC, IF

## Dilutions

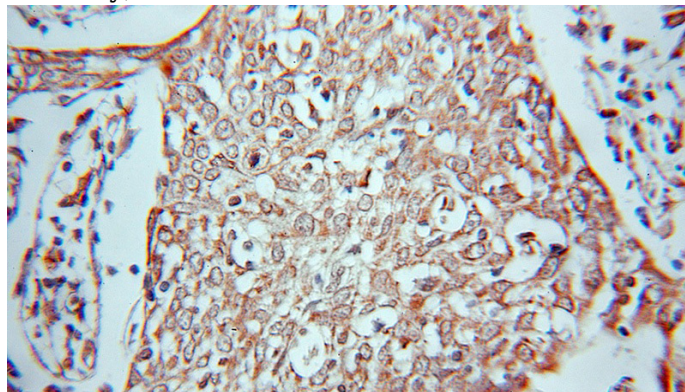
Recommended Dilution:

WB: 1:200-1:2000

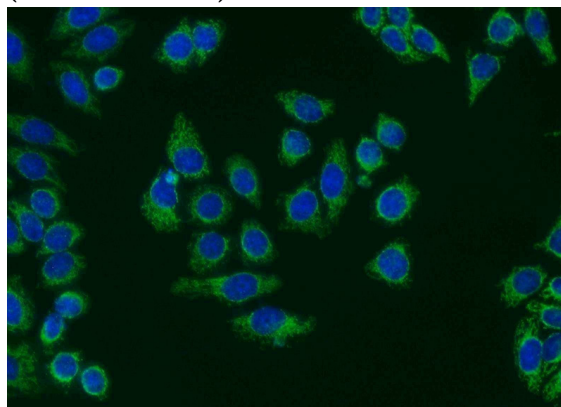
## Validations



HeLa cells were subjected to SDS PAGE followed by western blot with Catalog No:115277(SHMT2 antibody) at dilution of 1:800



Immunohistochemical of paraffin-embedded human cervical cancer using Catalog No:115277(SHMT2 antibody) at dilution of 1:50 (under 10x lens)



Immunofluorescent analysis of MCF-7 cells using

# SHMT2 antibody



Catalog Number: 115277

---

Catalog No:115277(SHMT2 Antibody) at dilution of 1:50 and Alexa Fluor 488-conjugated AffiniPure Goat Anti-Rabbit IgG(H+L)