

# SHD antibody

Catalog Number: 115270

## Product name

SHD antibody

## Specificity

Human, Mouse; other species not tested.

## Antibody description

SHD Rabbit Polyclonal antibody. Positive IF detected in Neuro-2a cells. Positive WB detected in mouse brain tissue, Neuro-2a cells, NIH/3T3 cells, SMMC-7721 cells. Observed molecular weight by Western-blot: 40-50 kDa

## Preparation

This antibody was obtained by immunization of SHD recombinant protein (Accession Number: NM\_020209). Purification method: Antigen affinity purified.

## Formulation

PBS with 0.1% sodium azide and 50% glycerol pH 7.3.

## Storage

Store at -20°C. DO NOT ALIQUOT

## Clonality

Polyclonal

## Ig Type

Rabbit IgG

## Applications

ELISA, WB, IF

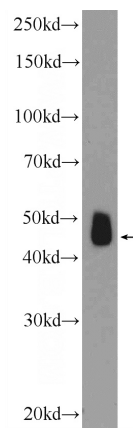
## Dilutions

Recommended Dilution:

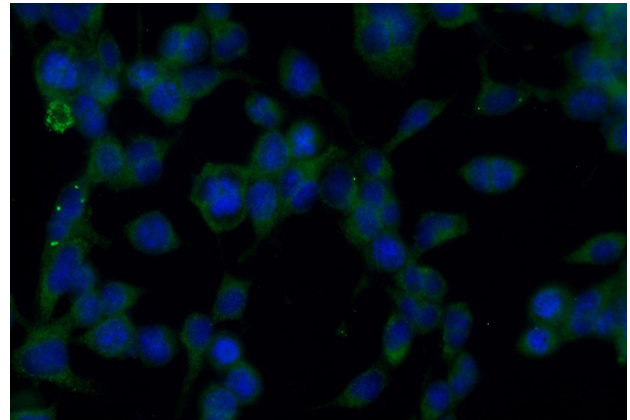
WB: 1:200-1:2000

IF: 1:50-1:500

## Validations



mouse brain tissue were subjected to SDS PAGE followed by western blot with Catalog No:115270(SHD Antibody) at dilution of 1:600



Immunofluorescent analysis of (-20oc Ethanol) fixed Neuro-2a cells using Catalog No:115270(SHD Antibody) at dilution of 1:50 and Alexa Fluor 488-conjugated AffiniPure Goat Anti-Rabbit IgG(H+L)