

SHC3 antibody

Catalog Number: 115267

Product name

SHC3 antibody

IP: 1:200-1:1000

IHC: 1:20-1:200

Specificity

Human, Mouse, Rat; other species not tested.

Antibody description

SHC3 Rabbit Polyclonal antibody. Positive IHC detected in human pancreas cancer tissue. Positive WB detected in BxPC-3 cells. Positive IP detected in BxPC-3 cells. Observed molecular weight by Western-blot: 64 kDa

Preparation

This antibody was obtained by immunization of SHC3 recombinant protein (Accession Number: NM_016848). Purification method: Antigen affinity purified.

Formulation

PBS with 0.1% sodium azide and 50% glycerol pH 7.3.

Storage

Store at -20°C. DO NOT ALIQUOT

Clonality

Polyclonal

Ig Type

Rabbit IgG

Applications

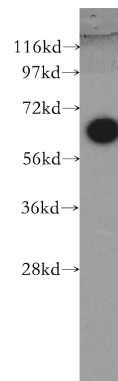
ELISA, WB, IHC, IP

Dilutions

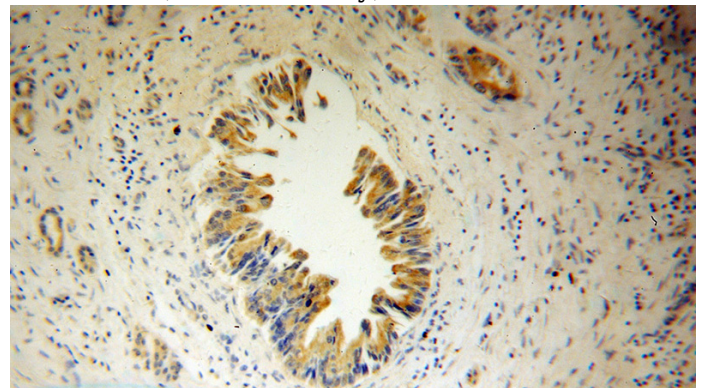
Recommended Dilution:

WB: 1:500-1:5000

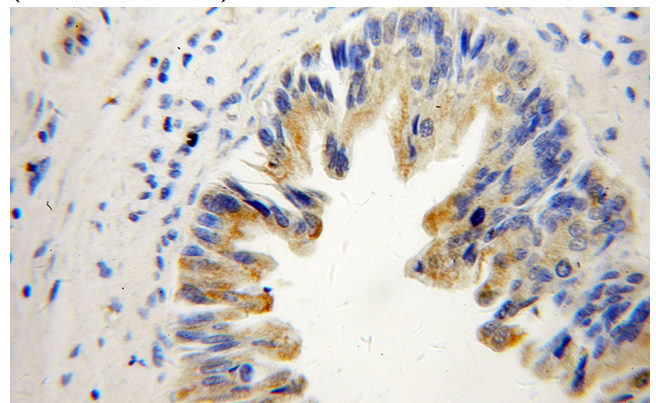
Validations



BxPC-3 cells were subjected to SDS PAGE followed by western blot with Catalog No:115267(SHC3 antibody) at dilution of 1:400



Immunohistochemical of paraffin-embedded human pancreas cancer using Catalog No:115267(SHC3 antibody) at dilution of 1:50 (under 10x lens)



Immunohistochemical of paraffin-embedded

SHC3 antibody

Catalog Number: 115267

human pancreas cancer using Catalog No:115267(SHC3 antibody) at dilution of 1:50 (under 40x lens)

IP Result of anti-SHC3 (IP:Catalog No:115267, 4ug; Detection:Catalog No:115267 1:300) with BxPC-3 cells lysate 2800ug.

