

SHC antibody

Catalog Number: 115265

Product name

SHC antibody

IHC: 1:20-1:200

IF: 1:10-1:100

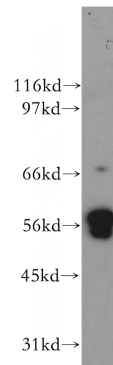
Specificity

Human, Mouse, Rat; other species not tested.

Validations

Antibody description

SHC Rabbit Polyclonal antibody. Positive WB detected in NIH/3T3 cells, HeLa cells. Positive IHC detected in human pancreas cancer tissue. Positive IF detected in HepG2 cells. Observed molecular weight by Western-blot: 52kd and 66kd



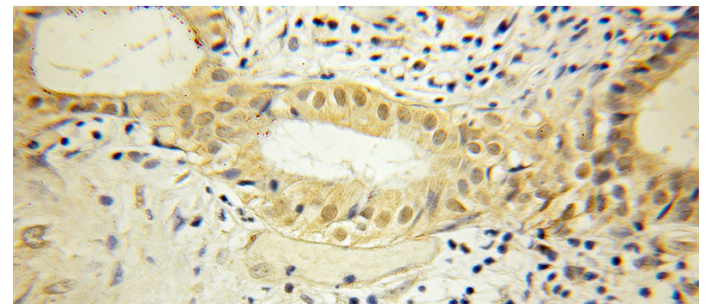
Preparation

This antibody was obtained by immunization of SHC recombinant protein (Accession Number: XM_047427974). Purification method: Antigen affinity purified.

NIH/3T3 cells were subjected to SDS PAGE followed by western blot with Catalog No:115265(SHC1 antibody) at dilution of 1:500

Formulation

PBS with 0.1% sodium azide and 50% glycerol pH 7.3.



Storage

Store at -20°C. DO NOT ALIQUOT

Clonality

Polyclonal

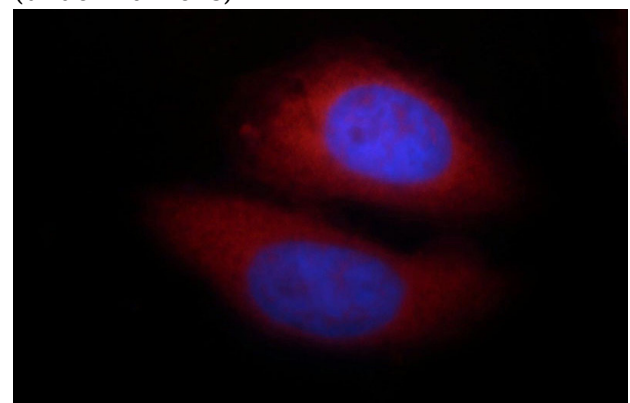
Immunohistochemical of paraffin-embedded human pancreas cancer using Catalog No:115265(SHC1 antibody) at dilution of 1:50 (under 10x lens)

Ig Type

Rabbit IgG

Applications

ELISA, WB, IHC, IF



Dilutions

Recommended Dilution:

WB: 1:500-1:5000

Immunofluorescent analysis of HepG2 cells, using

SHC antibody



Catalog Number: 115265

SHC1 antibody Catalog No:115265 at 1:25
dilution and Rhodamine-labeled goat anti-rabbit

IgG (red). Blue pseudocolor = DAPI (fluorescent
DNA dye).