

SHARPIN antibody



Catalog Number: 115264

Product name

SHARPIN antibody

IP: 1:500-1:5000

IHC: 1:20-1:200

Specificity

Human, Mouse, Rat; other species not tested.

Antibody description

SHARPIN Rabbit Polyclonal antibody. Positive WB detected in Raji cells, A549 cells, Jurkat cells. Positive IP detected in Raji cells. Positive IHC detected in human small intestine tissue. Observed molecular weight by Western-blot: 40kd

Preparation

This antibody was obtained by immunization of SHARPIN recombinant protein (Accession Number: XM_017013888). Purification method: Antigen affinity purified.

Formulation

PBS with 0.02% sodium azide and 50% glycerol pH 7.3.

Storage

Store at -20°C. DO NOT ALIQUOT

Clonality

Polyclonal

Ig Type

Rabbit IgG

Applications

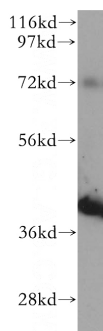
ELISA, WB, IP, IHC

Dilutions

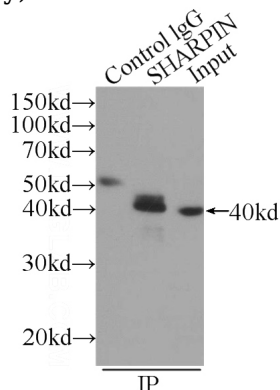
Recommended Dilution:

WB: 1:500-1:5000

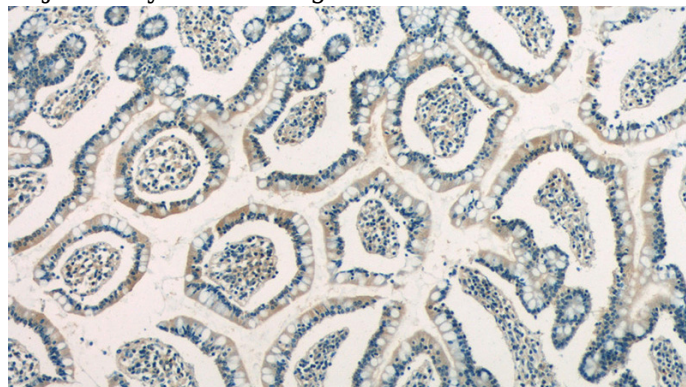
Validations



Raji cells were subjected to SDS PAGE followed by western blot with Catalog No:115264(SHARPIN antibody) at dilution of 1:500



IP Result of anti-SHARPIN (IP:Catalog No:115264, 3ug; Detection:Catalog No:115264 1:1500) with Raji cells lysate 2520ug.



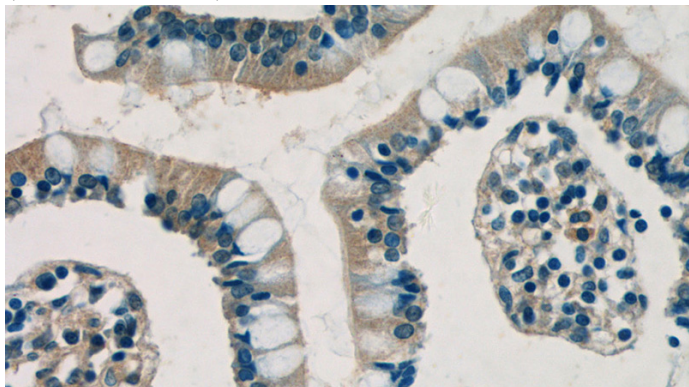
Immunohistochemistry of paraffin-embedded human small intestine tissue slide using Catalog

SHARPIN antibody



Catalog Number: 115264

No:115264(SHARPIN Antibody) at dilution of 1:50
(under 10x lens)



Immunohistochemistry of paraffin-embedded
human small intestine tissue slide using Catalog
No:115264(SHARPIN Antibody) at dilution of 1:50
(under 40x lens)