

SH3PXD2A antibody



Catalog Number: 115262

Product name

SH3PXD2A antibody

IF: 1:10-1:100

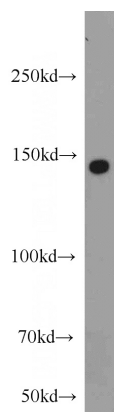
Specificity

Human, Mouse, Rat; other species not tested.

Antibody description

SH3PXD2A Rabbit Polyclonal antibody. Positive IHC detected in human breast cancer tissue. Positive IF detected in HepG2 cells. Positive WB detected in HeLa cells, HepG2 cells. Observed molecular weight by Western-blot: 140-150 kDa

Validations



Preparation

This antibody was obtained by immunization of Peptide (Accession Number: NM_014631). Purification method: Antigen affinity purified.

HeLa cells were subjected to SDS PAGE followed by western blot with Catalog No:115262(SH3PXD2A antibody) at dilution of 1:500

Formulation

PBS with 0.02% sodium azide and 50% glycerol pH 7.3.

Storage

Store at -20°C. DO NOT ALIQUOT

Clonality

Polyclonal

Ig Type

Rabbit IgG

Applications

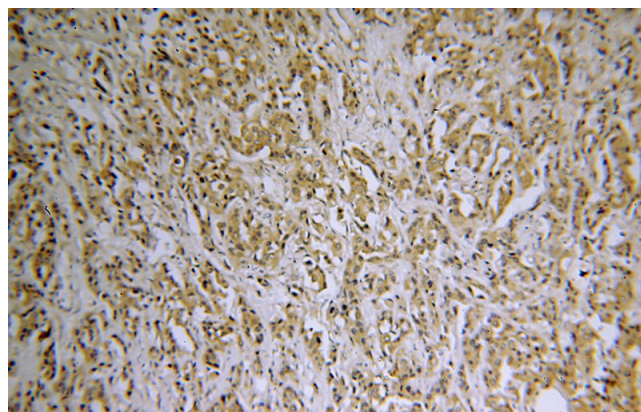
ELISA, WB, IHC, IF

Dilutions

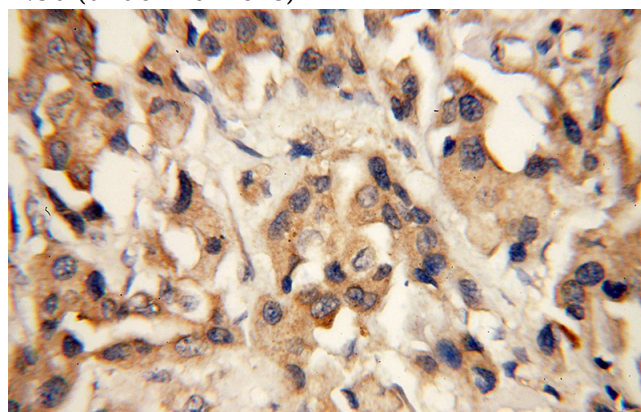
Recommended Dilution:

WB: 1:200-1:2000

IHC: 1:20-1:200



Immunohistochemical of paraffin-embedded human breast cancer using Catalog No:115262(SH3PXD2A antibody) at dilution of 1:50 (under 10x lens)



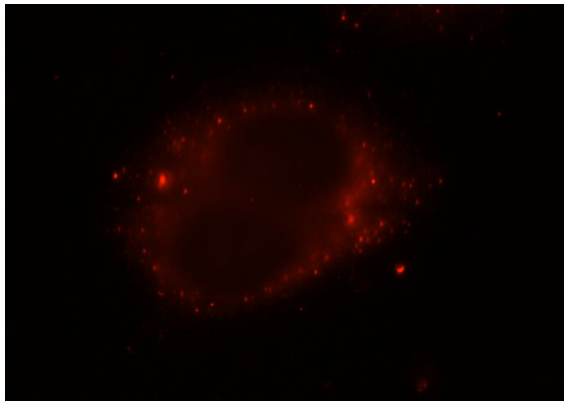
Immunohistochemical of paraffin-embedded

SH3PXD2A antibody



Catalog Number: 115262

human breast cancer using Catalog No:115262(SH3PXD2A antibody) at dilution of 1:50 (under 40x lens)



Immunofluorescent analysis of HepG2 cells using Catalog No:115262(SH3PXD2A Antibody) at dilution of 1:25 and Rhodamine-Goat anti-Rabbit IgG