

SH3GLB2 antibody

Catalog Number: 115261

Product name

SH3GLB2 antibody

Specificity

Human, Mouse, Rat; other species not tested.

Antibody description

SH3GLB2 Rabbit Polyclonal antibody. Positive IP detected in HeLa cells. Positive WB detected in HeLa cells, human testis tissue, mouse lung tissue, mouse testis tissue, rat lung tissue. Observed molecular weight by Western-blot: 47-50 kDa

Preparation

This antibody was obtained by immunization of SH3GLB2 recombinant protein (Accession Number: NM_020145). Purification method: Antigen affinity purified.

Formulation

PBS with 0.02% sodium azide and 50% glycerol pH 7.3.

Storage

Store at -20°C. DO NOT ALIQUOT

Clonality

Polyclonal

Ig Type

Rabbit IgG

Applications

ELISA, WB, IP

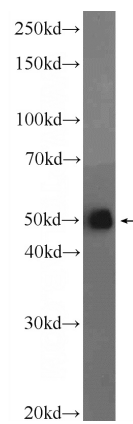
Dilutions

Recommended Dilution:

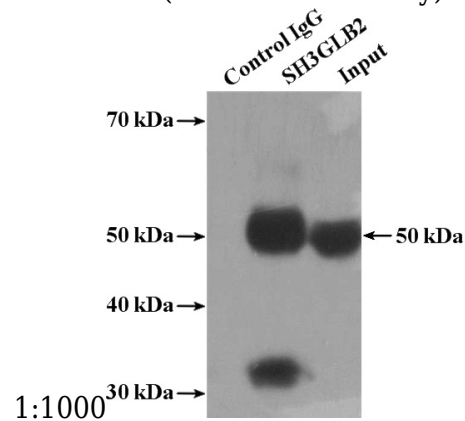
WB: 1:500-1:5000

IP: 1:500-1:5000

Validations



HeLa cells were subjected to SDS PAGE followed by western blot with Catalog No:115261 (SH3GLB2 Antibody) at dilution of



IP Result of anti-SH3GLB2 (IP:Catalog No:115261, 4ug; Detection:Catalog No:115261 1:1000) with HeLa cells lysate 2600ug.