

# SIX5 antibody

Catalog Number: 115252

## Product name

SIX5 antibody

IP: 1:200-1:1000

IHC: 1:20-1:200

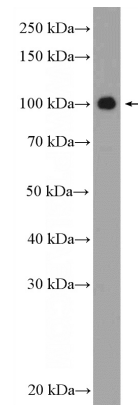
## Specificity

Human; other species not tested.

## Validations

## Antibody description

SIX5 Rabbit Polyclonal antibody. Positive WB detected in Y79 cells. Positive IP detected in Y79 cells. Positive IHC detected in human kidney tissue. Observed molecular weight by Western-blot: 100-105 kDa



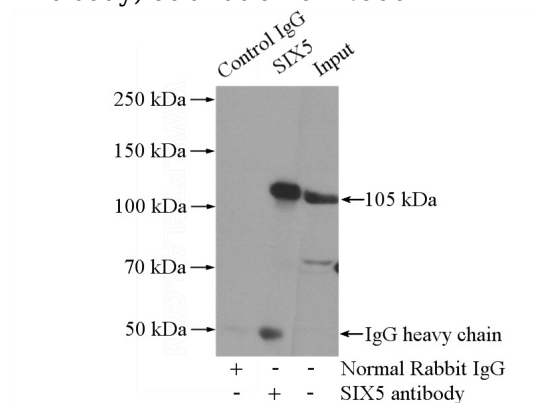
## Preparation

This antibody was obtained by immunization of SIX5 recombinant protein (Accession Number: NM\_175875). Purification method: Antigen affinity purified.

Y79 cells were subjected to SDS PAGE followed by western blot with Catalog No:115252(SIX5 Antibody) at dilution of 1:600

## Formulation

PBS with 0.02% sodium azide and 50% glycerol pH 7.3.



## Storage

Store at -20°C. DO NOT ALIQUOT

IP Result of anti-SIX5 (IP:Catalog No:115252, 4ug; Detection:Catalog No:115252 1:300) with Y79 cells lysate 2000ug.

## Clonality

Polyclonal

## Ig Type

Rabbit IgG

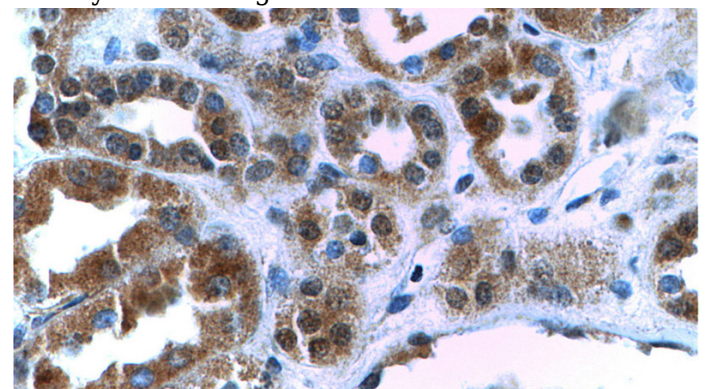
## Applications

ELISA, IHC, WB, IP

## Dilutions

Recommended Dilution:

WB: 1:200-1:2000



Immunohistochemistry of paraffin-embedded human kidney tissue slide using Catalog

# SIX5 antibody



Catalog Number: 115252

---

No:115252(SIX5 Antibody) at dilution of 1:200 (under 40x lens)