

SIPA1 antibody

Catalog Number: 115236

Product name

SIPA1 antibody

Specificity

human, mouse, rat; other species not tested.

Antibody description

SIPA1 Rabbit Polyclonal antibody. Positive WB detected in HT-1080 cells, HeLa cells. Observed molecular weight by Western-blot: 130kd

Preparation

This antibody was obtained by immunization of SIPA1 recombinant protein (Accession Number: XM_047427428). Purification method: Antigen affinity purified.

Formulation

PBS with 0.02% sodium azide and 50% glycerol pH 7.3.

Storage

Store at -20°C. DO NOT ALIQUOT

Clonality

Polyclonal

Ig Type

Rabbit IgG

Applications

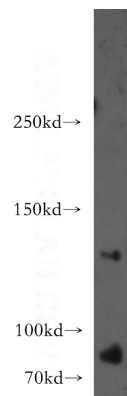
ELISA, WB

Dilutions

Recommended Dilution:

WB: 1:200-1:2000

Validations



HT-1080 cells were subjected to SDS PAGE followed by western blot with Catalog No:115236(SIPA1 antibody) at dilution of 1:300