

# SIN3A antibody

Catalog Number: 115234

## Product name

SIN3A antibody

IP: 1:200-1:2000

IF: 1:20-1:200

## Specificity

Human, Mouse, Rat; other species not tested.

## Antibody description

SIN3A Rabbit Polyclonal antibody. Positive IF detected in HepG2 cells. Positive WB detected in Jurkat cells, HEK-293 cells, HeLa cells, K-562 cells. Positive IP detected in Jurkat cells. Observed molecular weight by Western-blot: 150 kDa

## Preparation

This antibody was obtained by immunization of SIN3A recombinant protein (Accession Number: BC066364). Purification method: Antigen affinity purified.

## Formulation

PBS with 0.02% sodium azide and 50% glycerol pH 7.3.

## Storage

Store at -20°C. DO NOT ALIQUOT

## Clonality

Polyclonal

## Ig Type

Rabbit IgG

## Applications

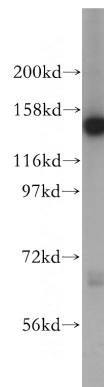
ELISA, WB, IF, IP

## Dilutions

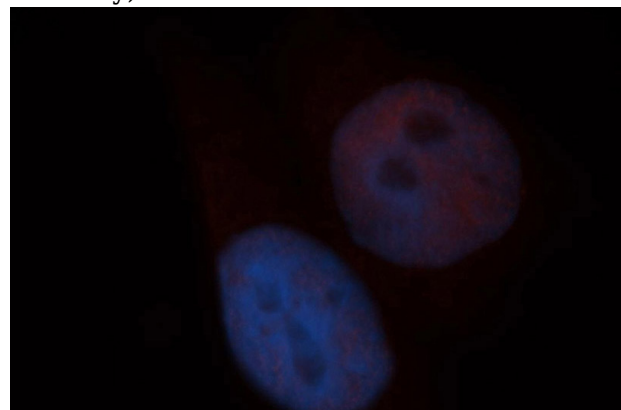
Recommended Dilution:

WB: 1:200-1:2000

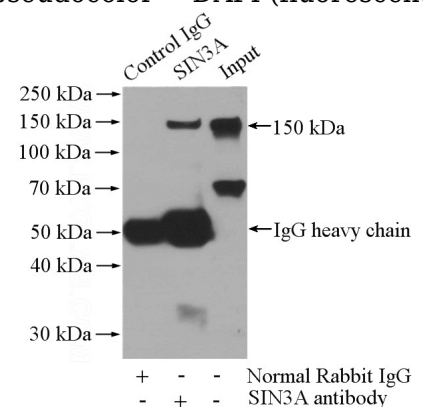
## Validations



Jurkat cells were subjected to SDS PAGE followed by western blot with Catalog No:115234(SIN3A antibody) at dilution of 1:500



Immunofluorescent analysis of HepG2 cells, using SIN3A antibody Catalog No:115234 at 1:50 dilution and Rhodamine-labeled goat anti-rabbit IgG (red). Blue pseudocolor = DAPI (fluorescent DNA dye).



# SIN3A antibody



Catalog Number: 115234

---

IP Result of anti-SIN3A (IP:Catalog No:115234,

4ug; Detection:Catalog No:115234 1:500) with Jurkat cells lysate 3600ug.