

SIM2 antibody

Catalog Number: 115233

Product name

SIM2 antibody

Specificity

Human, Mouse, Rat; other species not tested.

Antibody description

SIM2 Rabbit Polyclonal antibody. Positive IP detected in mouse skeletal muscle tissue. Positive WB detected in COLO 320 cells, human skeletal muscle tissue, mouse skeletal muscle tissue, PC-3 cells. Observed molecular weight by Western-blot: 60-64 kDa

Preparation

This antibody was obtained by immunization of SIM2 recombinant protein (Accession Number: NM_009586). Purification method: Antigen affinity purified.

Formulation

PBS with 0.02% sodium azide and 50% glycerol pH 7.3.

Storage

Store at -20°C. DO NOT ALIQUOT

Clonality

Polyclonal

Ig Type

Rabbit IgG

Applications

ELISA, WB, IP

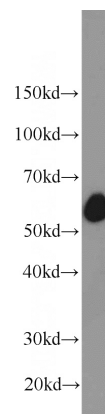
Dilutions

Recommended Dilution:

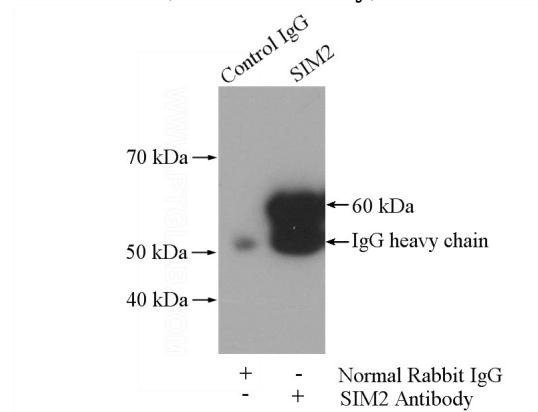
WB: 1:500-1:5000

IP: 1:200-1:2000

Validations



COLO 320 cells were subjected to SDS PAGE followed by western blot with Catalog No:115233(SIM2 antibody) at dilution of 1:1000



IP Result of anti-SIM2 (IP:Catalog No:115233, 4ug; Detection:Catalog No:115233 1:800) with mouse skeletal muscle tissue lysate 2200ug.