

SIL1 antibody

Catalog Number: 115232

Product name

SIL1 antibody

IHC: 1:20-1:200

IF: 1:10-1:100

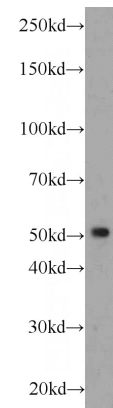
Specificity

Human, Mouse; other species not tested.

Validations

Antibody description

SIL1 Rabbit Polyclonal antibody. Positive WB detected in L02 cells, mouse kidney tissue, mouse liver tissue. Positive IHC detected in human kidney tissue. Positive IF detected in HepG2 cells. Observed molecular weight by Western-blot: 52 kDa



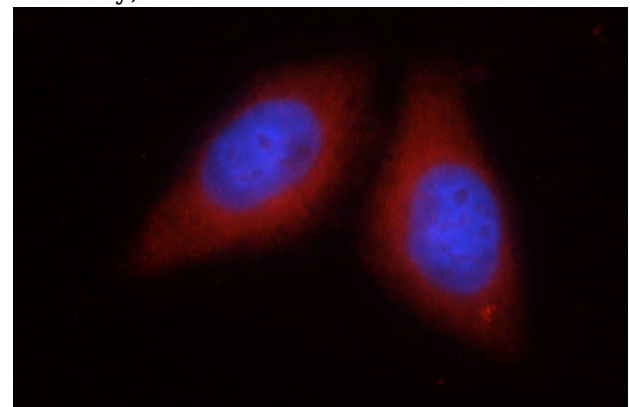
Preparation

This antibody was obtained by immunization of SIL1 recombinant protein (Accession Number: NM_022464). Purification method: Antigen Affinity purified.

L02 cells were subjected to SDS PAGE followed by western blot with Catalog No:115232(SIL1 antibody) at dilution of 1:1500

Formulation

PBS with 0.02% sodium azide and 50% glycerol pH 7.3.



Storage

Store at -20°C. DO NOT ALIQUOT

Clonality

Polyclonal

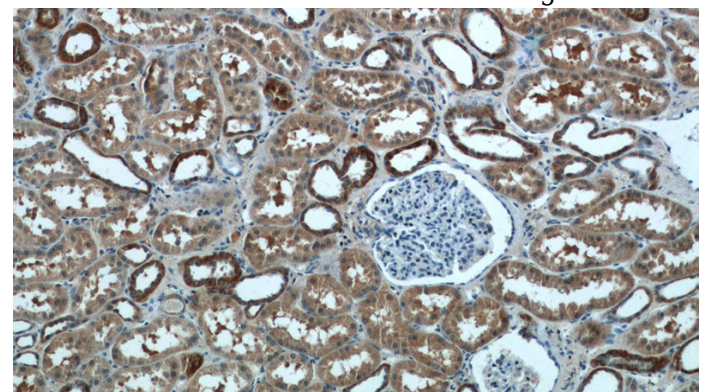
Immunofluorescent analysis of HepG2 cells using Catalog No:115232(SIL1 Antibody) at dilution of 1:25 and Rhodamine-Goat anti-Rabbit IgG

Ig Type

Rabbit IgG

Applications

ELISA, WB, IF, IHC



Dilutions

Recommended Dilution:

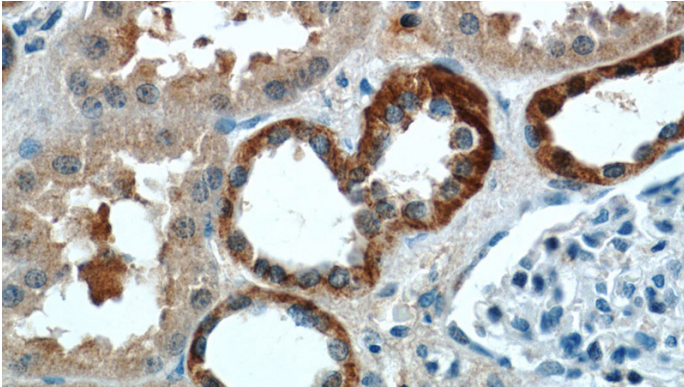
WB: 1:500-1:5000

Immunohistochemistry of paraffin-embedded human kidney tissue slide using Catalog

SIL1 antibody

Catalog Number: 115232

No:115232(SIL1 Antibody) at dilution of 1:50
(under 10x lens)



Immunohistochemistry of paraffin-embedded
human kidney tissue slide using Catalog
No:115232(SIL1 Antibody) at dilution of 1:50
(under 40x lens)