

# SIK1 antibody



Catalog Number: 115230

## Product name

SIK1 antibody

IHC: 1:20-1:200

IF: 1:10-1:100

## Specificity

Human, Mouse; other species not tested.

## Antibody description

SIK1 Rabbit Polyclonal antibody. Positive WB detected in A549 cells, Jurkat cells. Positive IHC detected in human lung cancer tissue. Positive IF detected in MCF-7 cells. Observed molecular weight by Western-blot: 85kd

## Preparation

This antibody was obtained by immunization of SIK1 recombinant protein (Accession Number: NM\_173354). Purification method: Antigen affinity purified.

## Formulation

PBS with 0.02% sodium azide and 50% glycerol pH 7.3.

## Storage

Store at -20°C. DO NOT ALIQUOT

## Clonality

Polyclonal

## Ig Type

Rabbit IgG

## Applications

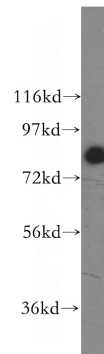
ELISA, WB, IHC, IF

## Dilutions

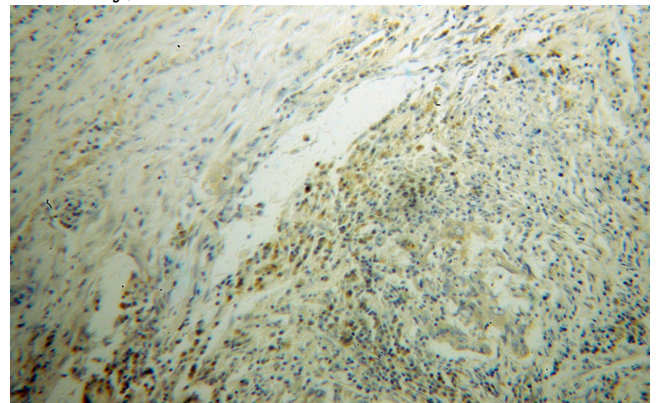
Recommended Dilution:

WB: 1:200-1:2000

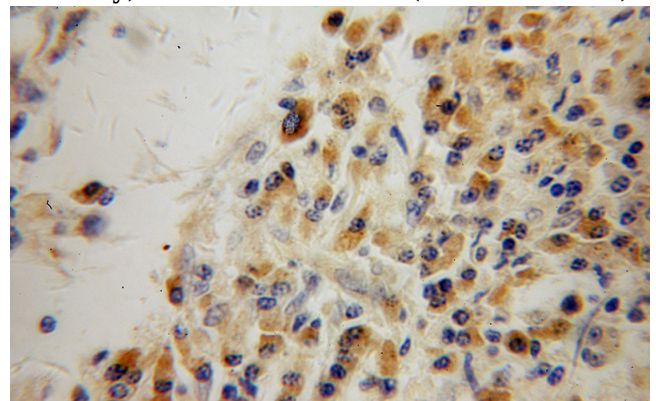
## Validations



A549 cells were subjected to SDS PAGE followed by western blot with Catalog No:115230(SIK1 antibody) at dilution of 1:400



Immunohistochemical of paraffin-embedded human lung cancer using Catalog No:115230(SIK1 antibody) at dilution of 1:100 (under 10x lens)



Immunohistochemical of paraffin-embedded human lung cancer using Catalog No:115230(SIK1 antibody) at dilution of 1:100 (under 10x lens)

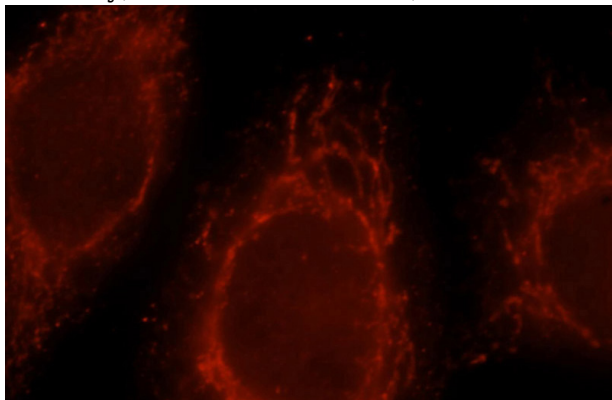
# SIK1 antibody



Catalog Number: 115230

---

antibody) at dilution of 1:100 (under 40x lens)



Immunofluorescent analysis of MCF-7 cells, using Sik1 antibody Catalog No:115230 at 1:25 dilution and Rhodamine-labeled goat anti-rabbit IgG (red).