

SIGMAR1 antibody



Catalog Number: 115228

Product name

SIGMAR1 antibody

IHC: 1:20-1:200

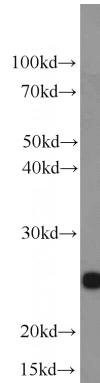
Specificity

Human, Mouse, Rat; other species not tested.

Validations

Antibody description

SIGMAR1 Rabbit Polyclonal antibody. Positive IHC detected in human liver cancer tissue. Positive WB detected in mouse kidney tissue, mouse brain tissue, mouse colon tissue. Observed molecular weight by Western-blot: 27 kDa



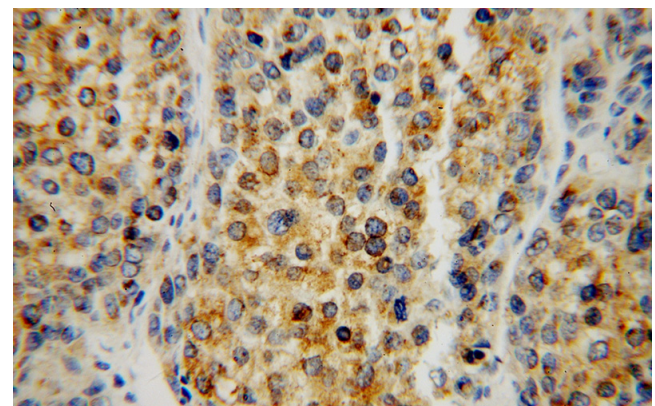
Preparation

This antibody was obtained by immunization of SIGMAR1 recombinant protein (Accession Number: NM_005866). Purification method: Antigen affinity purified.

mouse kidney tissue were subjected to SDS PAGE followed by western blot with Catalog No:115228(SIGMAR1 antibody) at dilution of 1:500

Formulation

PBS with 0.02% sodium azide and 50% glycerol pH 7.3.



Storage

Store at -20°C. DO NOT ALIQUOT

Clonality

Polyclonal

Immunohistochemical of paraffin-embedded human liver cancer using Catalog No:115228(SIGMAR1 antibody) at dilution of 1:50 (under 40x lens)

Ig Type

Rabbit IgG

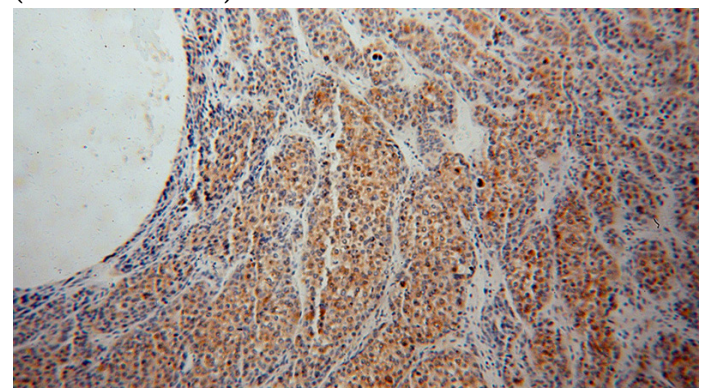
Applications

ELISA, WB, IHC

Dilutions

Recommended Dilution:

WB: 1:200-1:2000



Immunohistochemical of paraffin-embedded human liver cancer using Catalog

SIGMAR1 antibody



Catalog Number: 115228

No:115228(SIGMAR1 antibody) at dilution of 1:50 (under 10x lens)