

SETD6 antibody

Catalog Number: 115223

Product name

SETD6 antibody

Specificity

Human, Mouse; other species not tested.

Antibody description

SETD6 Rabbit Polyclonal antibody. Positive WB detected in RAW 264.7 cells. Observed molecular weight by Western-blot: 53 kDa

Preparation

This antibody was obtained by immunization of SETD6 recombinant protein (Accession Number: NM_001160305). Purification method: Antigen affinity purified.

Formulation

PBS with 0.1% sodium azide and 50% glycerol pH 7.3.

Storage

Store at -20°C. DO NOT ALIQUOT

Clonality

Polyclonal

Ig Type

Rabbit IgG

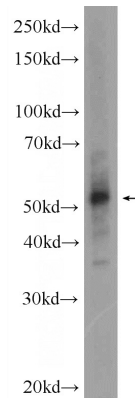
Applications

ELISA, WB

Dilutions

Recommended Dilution:

WB: 1:200-1:2000

Validations

RAW 264.7 cells were subjected to SDS PAGE followed by western blot with Catalog No:115223(SETD6 Antibody) at dilution of 1:600