

SETD2 antibody

Catalog Number: 115222

Product name

SETD2 antibody

Specificity

Human; other species not tested.

Antibody description

SETD2 Rabbit Polyclonal antibody. Positive WB detected in transfected cells. Positive IF detected in HepG2 cells. Observed molecular weight by Western-blot: 250 kDa

Preparation

This antibody was obtained by immunization of Peptide (Accession Number: NM_014159). Purification method: Antigen affinity purified.

Formulation

PBS with 0.02% sodium azide and 50% glycerol pH 7.3.

Storage

Store at -20°C. DO NOT ALIQUOT

Clonality

Polyclonal

Ig Type

Rabbit IgG

Applications

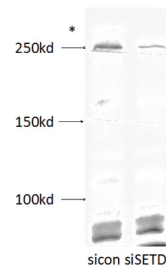
ELISA, WB, IF

Dilutions

Recommended Dilution:

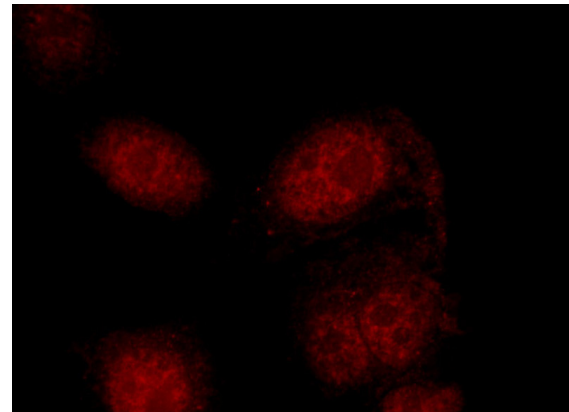
WB: N/AIF: 1:20-1:200

Validations



Negative control or SETD2 specific siRNAs were transfected into U2-OS cells with the final concentration of 20 nM. Forty eight hours after transfection, cells were lysed with RIPA buffer and subjected to SDS PAGE. The antibody dilution used for western blot was 1:500.

WB result of SETD2 antibody (Catalog No:115222, 1:500) with siRNA transfected U2-OS cells.



Immunofluorescent analysis of HepG2 cells using Catalog No:115222(SETD2 Antibody) at dilution of 1:50 and Rhodamine-Goat anti-Rabbit IgG