

## Product name

SERPINB13 antibody

## Specificity

human, mouse, rat; other species not tested.

## Antibody description

SERPINB13 Rabbit Polyclonal antibody. Positive IHC detected in human skin. Positive IF detected in HepG2.

## Preparation

This antibody was obtained by immunization of SERPINB13 recombinant protein (Accession Number: NM\_012397). Purification method: Antigen affinity purified.

## Formulation

PBS with 0.02% sodium azide and 50% glycerol pH 7.3.

## Storage

Store at -20°C. DO NOT ALIQUOT

## Clonality

Polyclonal

## Ig Type

Rabbit IgG

## Applications

ELISA, IHC, IF

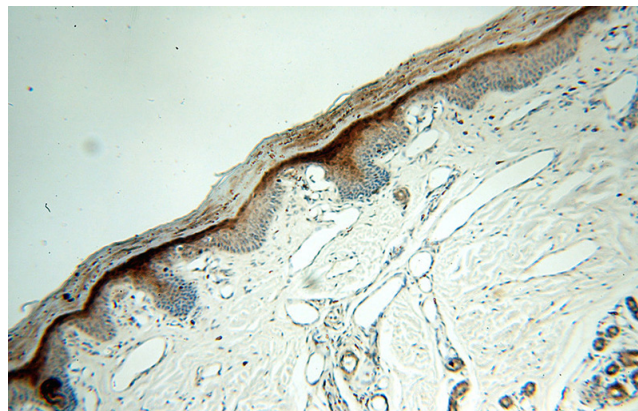
## Dilutions

Recommended Dilution:

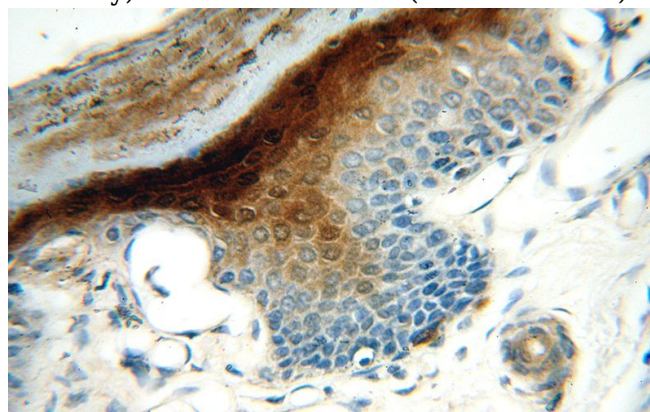
IHC: 1:20-1:200

IF: 1:10-1:100

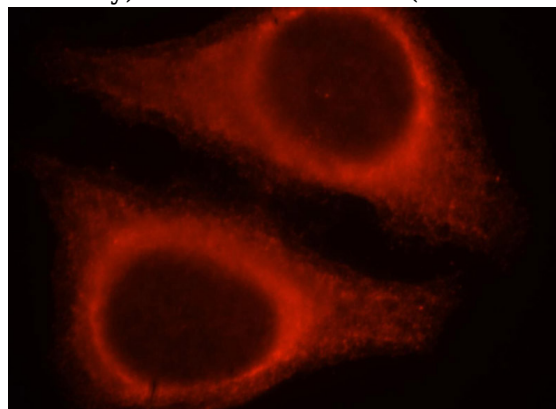
## Validations



Immunohistochemical of paraffin-embedded human skin using Catalog No:115202(SERPINB13 antibody) at dilution of 1:100 (under 10x lens)



Immunohistochemical of paraffin-embedded human skin using Catalog No:115202(SERPINB13 antibody) at dilution of 1:100 (under 40x lens)



Immunofluorescent analysis of HepG2 cells, using SERPINB13 antibody Catalog No:115202 at 1:25 dilution and Rhodamine-labeled goat anti-rabbit IgG (red).