

SERPINB10 antibody



Catalog Number: 115200

Product name

SERPINB10 antibody

IHC: 1:20-1:200

IF: 1:10-1:100

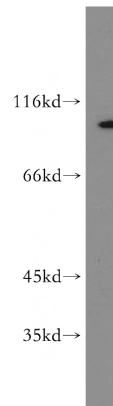
Specificity

Human, Mouse, Rat; other species not tested.

Validations

Antibody description

SERPINB10 Rabbit Polyclonal antibody. Positive WB detected in mouse spleen tissue, HL-60 cells, Sp2/0 cells. Positive IF detected in HepG2 cells. Positive IHC detected in human pancreas tissue, human placenta tissue. Observed molecular weight by Western-blot: 45kd, 98kd



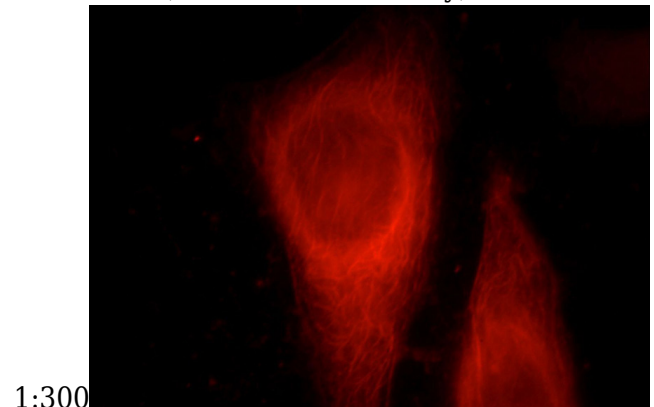
Preparation

This antibody was obtained by immunization of SERPINB10 recombinant protein (Accession Number: NM_005024). Purification method: Antigen affinity purified.

mouse spleen tissue were subjected to SDS PAGE followed by western blot with Catalog No:115200(SERPINB10 antibody) at dilution of

Formulation

PBS with 0.02% sodium azide and 50% glycerol pH 7.3.



Storage

Store at -20°C. DO NOT ALIQUOT

Clonality

Polyclonal

Immunofluorescent analysis of HepG2 cells, using SERPINB10 antibody Catalog No:115200 at 1:25 dilution and Rhodamine-labeled goat anti-rabbit IgG (red).

Ig Type

Rabbit IgG

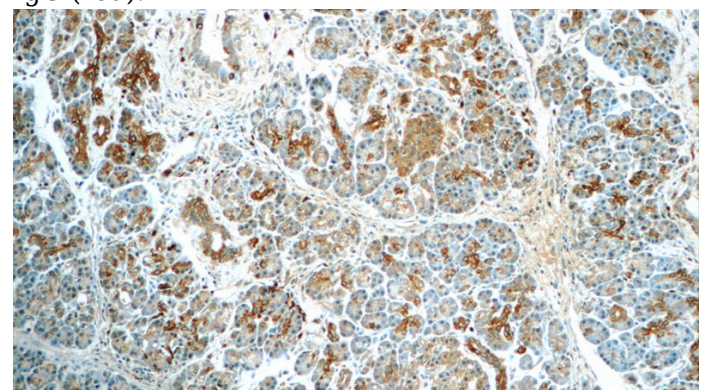
Applications

ELISA, WB, IF, IHC

Dilutions

Recommended Dilution:

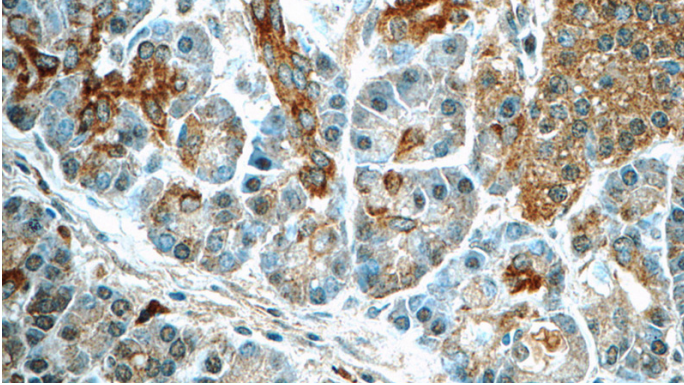
WB: 1:500-1:5000



SERPINB10 antibody

Catalog Number: 115200

human pancreas tissue slide using Catalog No:115200(SERPINB10 Antibody) at dilution of 1:50 (under 10x lens)



Immunohistochemistry of paraffin-embedded human pancreas tissue slide using Catalog No:115200(SERPINB10 Antibody) at dilution of 1:50 (under 40x lens)