

SERPINA10 antibody



Catalog Number: 115196

Product name

SERPINA10 antibody

WB: 1:500-1:5000

IP: 1:500-1:5000

Specificity

Human, Mouse, Rat; other species not tested.

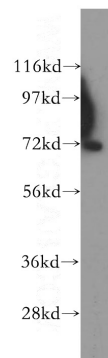
IHC: 1:20-1:200

IF: 1:20-1:200

Antibody description

SERPINA10 Rabbit Polyclonal antibody. Positive IHC detected in human liver tissue. Positive IF detected in L02 cells, HepG2 cells. Positive IP detected in L02 cells. Positive WB detected in human liver tissue, HepG2 cells, L02 cells, mouse liver tissue, RAW264.7 cells. Observed molecular weight by Western-blot: 72 kDa, 68 kDa, 50-55 kDa

Validations



Preparation

This antibody was obtained by immunization of SERPINA10 recombinant protein (Accession Number: NM_001100607). Purification method: Antigen affinity purified.

human liver tissue were subjected to SDS PAGE followed by western blot with Catalog No:115196(SERPINA10 antibody) at dilution of

Formulation

PBS with 0.1% sodium azide and 50% glycerol pH 7.3.

Storage

Store at -20°C. DO NOT ALIQUOT

Clonality

Polyclonal

Ig Type

Rabbit IgG

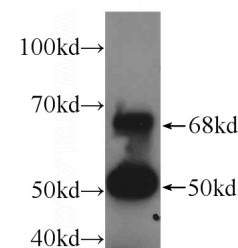
Applications

ELISA, WB, IHC, IP, IF

Dilutions

Recommended Dilution:

IP result of SERPINA10

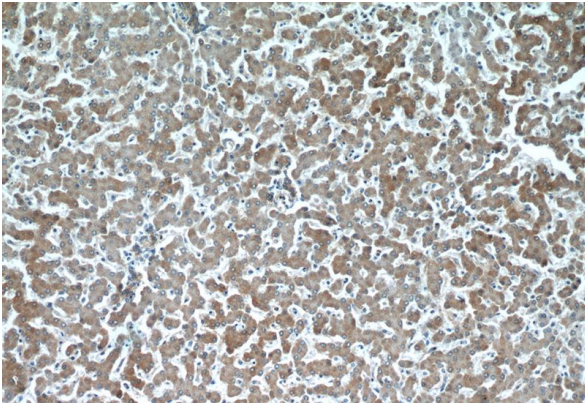


1:500

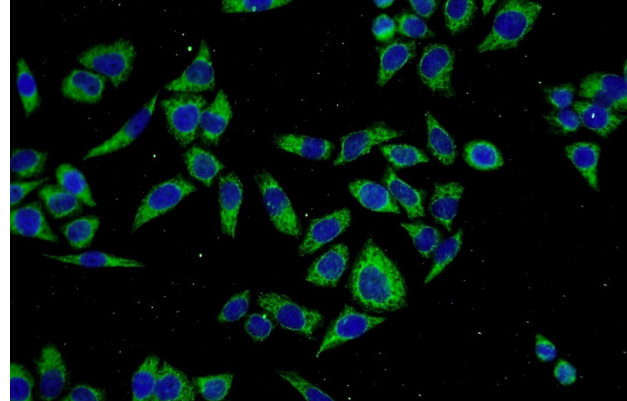
IP Result of anti-SERPINA10 (IP:Catalog No:115196, 3ug; Detection:Catalog No:115196 1:1000) with L02 cells lysate 2500ug.

SERPINA10 antibody

Catalog Number: 115196



Immunohistochemical of paraffin-embedded human liver using Catalog No:115196(SERPINA10 antibody) at dilution of 1:100 (under 40x lens)



Immunofluorescent analysis of L02 cells using Catalog No:115196(SERPINA10 Antibody) at dilution of 1:50 and Alexa Fluor 488-conjugated AffiniPure Goat Anti-Rabbit IgG(H+L)

Immunohistochemical of paraffin-embedded human liver using Catalog No:115196(SERPINA10 antibody) at dilution of 1:100 (under 10x lens)

