

# SERINC1 antibody

Catalog Number: 115192

## Product name

SERINC1 antibody

IHC: 1:20-1:200

IF: 1:50-1:500

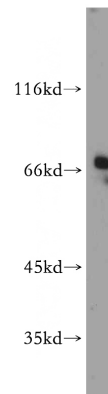
## Specificity

Human; other species not tested.

## Validations

## Antibody description

SERINC1 Rabbit Polyclonal antibody. Positive WB detected in HeLa cells, HepG2 cells, L02 cells. Positive IHC detected in human liver cancer tissue, human cervical cancer tissue. Positive IF detected in HepG2 cells. Observed molecular weight by Western-blot: 65 kDa



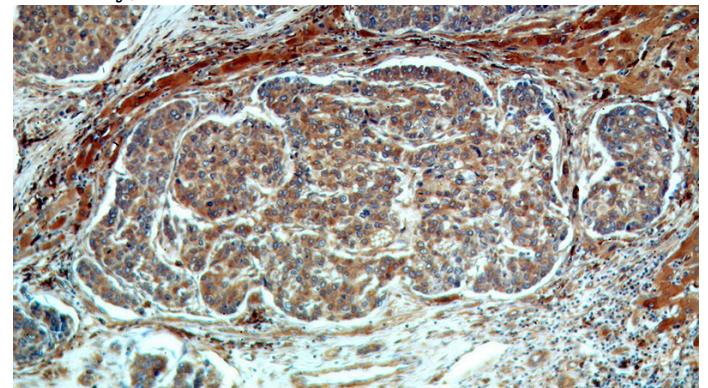
## Preparation

This antibody was obtained by immunization of Peptide (Accession Number: NM\_020755). Purification method: Antigen affinity purified.

HeLa cells were subjected to SDS PAGE followed by western blot with Catalog No:115192(SERINC1 antibody) at dilution of 1:100

## Formulation

PBS with 0.02% sodium azide and 50% glycerol pH 7.3.



## Storage

Store at -20°C. DO NOT ALIQUOT

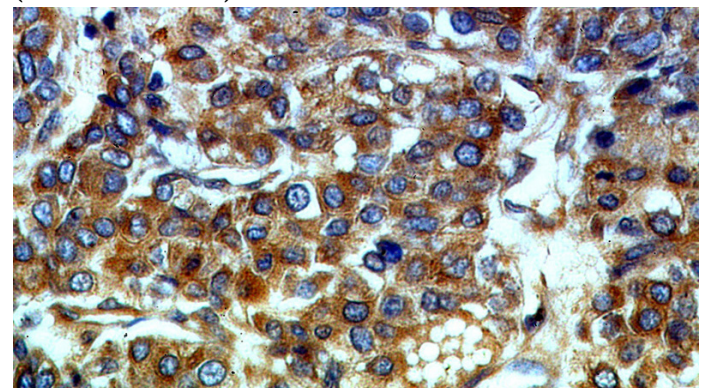
## Clonality

Polyclonal

Immunohistochemical of paraffin-embedded human liver cancer using Catalog No:115192(SERINC1 antibody) at dilution of 1:50 (under 10x lens)

## Ig Type

Rabbit IgG



## Applications

ELISA, WB, IHC, IF

## Dilutions

Recommended Dilution:

WB: 1:200-1:1000

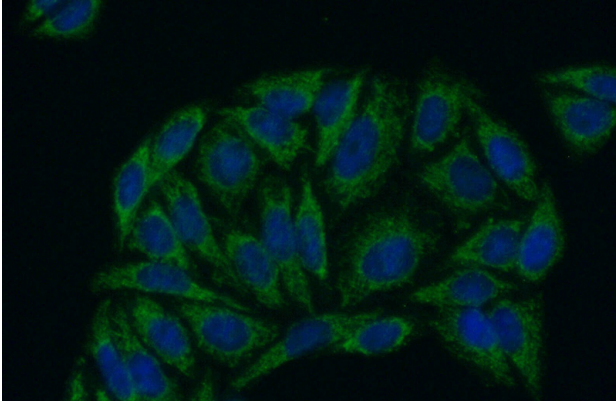
Immunohistochemical of paraffin-embedded

# SERINC1 antibody

Catalog Number: 115192

---

human liver cancer using Catalog  
No:115192(SERINC1 antibody) at dilution of 1:50  
(under 40x lens)



Immunofluorescent analysis of (-20oc Ethanol)  
fixed HepG2 cells using Catalog  
No:115192(SERINC1 Antibody) at dilution of 1:50  
and Alexa Fluor 488-conjugated AffiniPure Goat  
Anti-Rabbit IgG(H+L)