

# SH2D3A antibody

Catalog Number: 115181

## Product name

SH2D3A antibody

## Specificity

Human; other species not tested.

## Antibody description

SH2D3A Rabbit Polyclonal antibody. Positive WB detected in HeLa cells, HEK-293 cells, HepG2 cells. Positive IF detected in HeLa cells. Observed molecular weight by Western-blot: 64kd

## Preparation

This antibody was obtained by immunization of SH2D3A recombinant protein (Accession Number: NM\_005490). Purification method: Antigen affinity purified.

## Formulation

PBS with 0.02% sodium azide and 50% glycerol pH 7.3.

## Storage

Store at -20°C. DO NOT ALIQUOT

## Clonality

Polyclonal

## Ig Type

Rabbit IgG

## Applications

ELISA, WB, IF

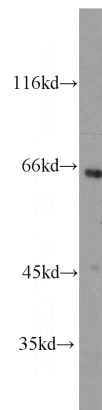
## Dilutions

Recommended Dilution:

WB: 1:200-1:2000

IF: 1:20-1:200

## Validations



HeLa cells were subjected to SDS PAGE followed by western blot with Catalog No:115181(NSP1;SH2D3A antibody) at dilution of

