

# SGK3 antibody

Catalog Number: 115168

## Product name

SGK3 antibody

## Specificity

Human, Mouse, Rat; other species not tested.

## Antibody description

SGK3 Rabbit Polyclonal antibody. Positive IP detected in mouse heart tissue. Positive WB detected in HeLa cells, A375 cells, human liver tissue, mouse skin tissue, rat kidney tissue. Positive IHC detected in human pancreas cancer tissue, human cervical cancer tissue. Positive IF detected in A375 cells. Observed molecular weight by Western-blot: 57 kDa

## Preparation

This antibody was obtained by immunization of SGK3 recombinant protein (Accession Number: NM\_001033578). Purification method: Antigen affinity purified.

## Formulation

PBS with 0.1% sodium azide and 50% glycerol pH 7.3.

## Storage

Store at -20°C. DO NOT ALIQUOT

## Clonality

Polyclonal

## Ig Type

Rabbit IgG

## Applications

ELISA, WB, IHC, IF, IP

## Dilutions

Recommended Dilution:

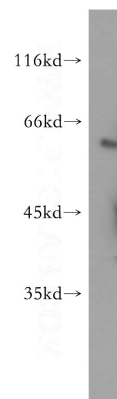
WB: 1:500-1:5000

IP: 1:200-1:2000

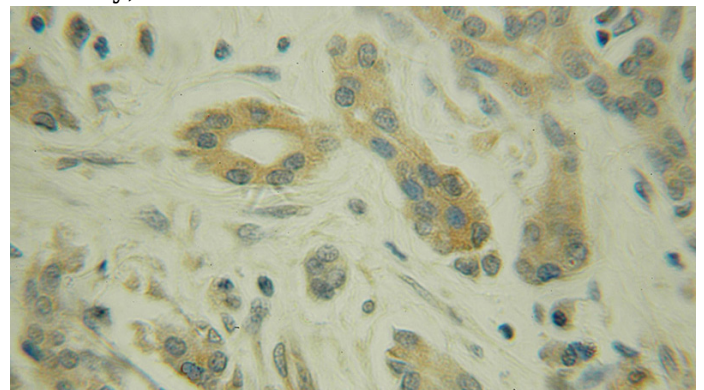
IHC: 1:20-1:200

IF: 1:10-1:100

## Validations



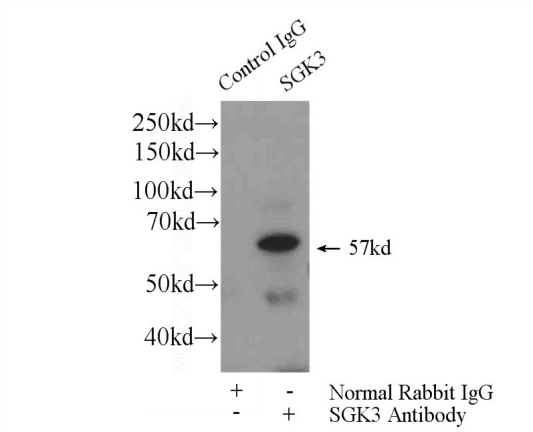
HeLa cells were subjected to SDS PAGE followed by western blot with Catalog No:115168(SGK3 antibody) at dilution of 1:300



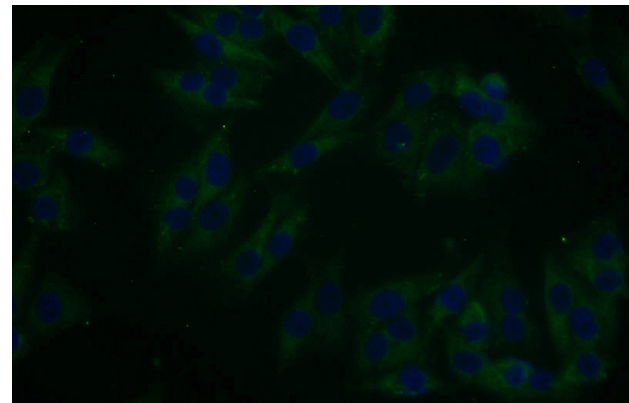
Immunohistochemical of paraffin-embedded human pancreas cancer using Catalog No:115168(SGK3 antibody) at dilution of 1:100 (under 10x lens)

# SGK3 antibody

Catalog Number: 115168



IP Result of anti-SGK3 (IP:Catalog No:115168, 4ug; Detection:Catalog No:115168 1:500) with mouse heart tissue lysate 3200ug.



Immunofluorescent analysis of A375 cells using Catalog No:115168(SGK3 Antibody) at dilution of 1:25 and Alexa Fluor 488-conjugated AffiniPure Goat Anti-Rabbit IgG(H+L)