

SGF29 antibody



Catalog Number: 115165

Product name

SGF29 antibody

Specificity

Human; other species not tested.

Antibody description

SGF29 Rabbit Polyclonal antibody. Positive IHC detected in human liver cancer tissue, human cervical cancer tissue. Positive WB detected in HeLa cells, MDA-MB-453s cells. Observed molecular weight by Western-blot: 33 kDa

Preparation

This antibody was obtained by immunization of SGF29 recombinant protein (Accession Number: NM_138414). Purification method: Antigen Affinity purified.

Formulation

PBS with 0.02% sodium azide and 50% glycerol pH 7.3.

Storage

Store at -20°C. DO NOT ALIQUOT

Clonality

Polyclonal

Ig Type

Rabbit IgG

Applications

ELISA, WB, IHC

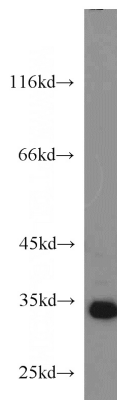
Dilutions

Recommended Dilution:

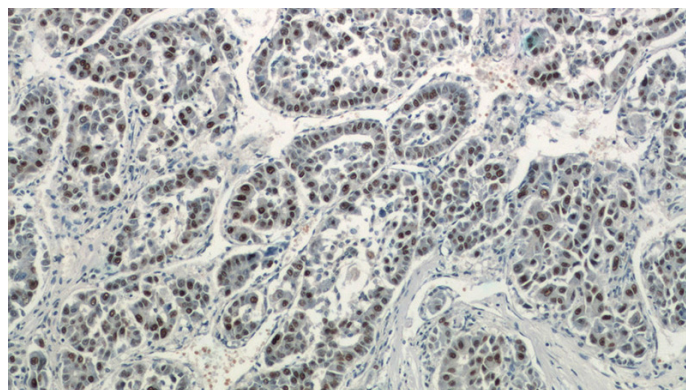
WB: 1:500-1:5000

IHC: 1:20-1:200

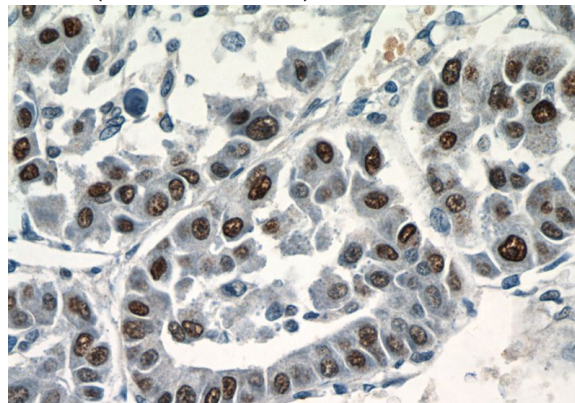
Validations



HeLa cells were subjected to SDS PAGE followed by western blot with Catalog No:115165(CCDC101 antibody) at dilution of 1:1000



Immunohistochemistry of paraffin-embedded human liver cancer tissue slide using Catalog No:115165(CCDC101 Antibody) at dilution of 1:400 (under 10x lens)



Immunohistochemistry of paraffin-embedded human liver cancer tissue slide using Catalog

SGF29 antibody



Catalog Number: 115165

No:115165(CCDC101 Antibody) at dilution of 1:400 (under 40x lens)