

# SFXN1 antibody

Catalog Number: 115159

## Product name

SFXN1 antibody

## Specificity

Human, Mouse; other species not tested.

## Antibody description

SFXN1 Rabbit Polyclonal antibody. Positive IP detected in mouse brain tissue. Positive WB detected in human brain tissue, human kidney tissue, K-562 cells, MCF7 cells, mouse brain tissue, mouse liver tissue, PC-3 cells. Positive IHC detected in human breast cancer tissue, human kidney tissue. Observed molecular weight by Western-blot: 30 kDa

## Preparation

This antibody was obtained by immunization of SFXN1 recombinant protein (Accession Number: BC020517). Purification method: Antigen affinity purified.

## Formulation

PBS with 0.1% sodium azide and 50% glycerol pH 7.3.

## Storage

Store at -20°C. DO NOT ALIQUOT

## Clonality

Polyclonal

## Ig Type

Rabbit IgG

## Applications

ELISA, WB, IHC, IP

## Dilutions

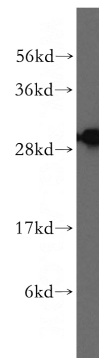
Recommended Dilution:

WB: 1:500-1:5000

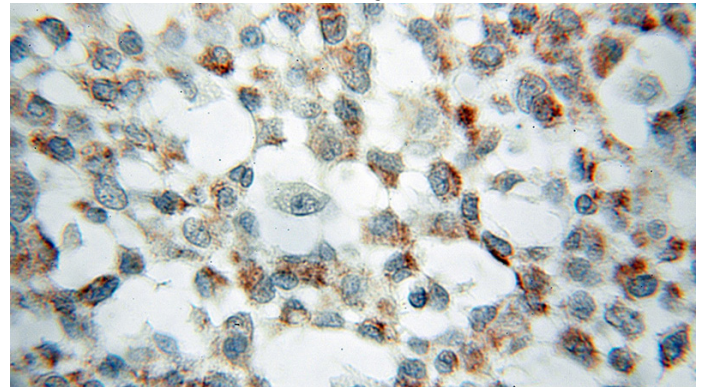
IP: 1:200-1:2000

IHC: 1:20-1:200

## Validations



human brain tissue were subjected to SDS PAGE followed by western blot with Catalog No:115159(SFXN1 antibody) at dilution of 1:400

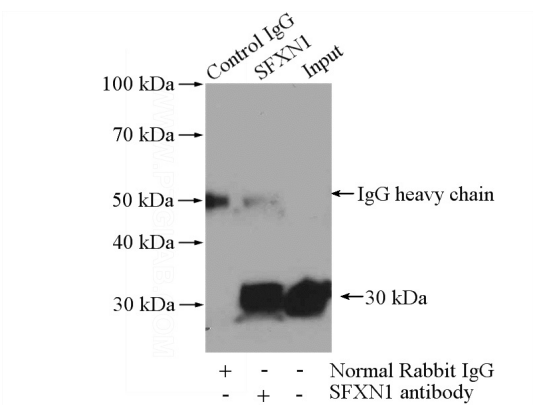


Immunohistochemical of paraffin-embedded human breast cancer using Catalog No:115159(SFXN1 antibody) at dilution of 1:50 (under 10x lens)

# SFXN1 antibody

Catalog Number: 115159

---



IP Result of anti-SFXN1 (IP:Catalog No:115159, 4ug; Detection:Catalog No:115159 1:800) with mouse brain tissue lysate 4000ug.