

Product name

Polyclonal

SFTPA1 / Surfactant Protein A antibody

Ig Type**Specificity**

Rabbit IgG

Human; other species not tested.

Applications**Antibody description**

ELISA, IHC

SFTPA1 / Surfactant Protein A Rabbit Polyclonal antibody. Positive IHC detected in human lung cancer tissue, human brain tissue, human heart tissue, human kidney tissue, human lung tissue, human ovary tissue, human placenta tissue, human skin tissue, human spleen tissue.

Dilutions

Recommended Dilution:

IHC: 1:20-1:200

Validations**Preparation**

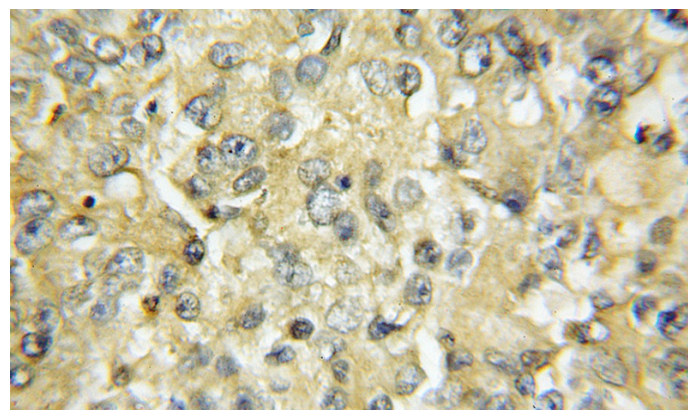
This antibody was obtained by immunization of SFTPA1 / Surfactant Protein A recombinant protein (Accession Number: BC026229). Purification method: Antigen affinity purified.

Formulation

PBS with 0.1% sodium azide and 50% glycerol pH 7.3.

Storage

Store at -20°C. DO NOT ALIQUOT

Clonality

Immunohistochemical of paraffin-embedded human lung cancer using Catalog No:115156(SFTPA1 antibody) at dilution of 1:50 (under 10x lens)