

# SFRS7 antibody

Catalog Number: 115152

## Product name

SFRS7 antibody

## Specificity

Human, Mouse, Rat; other species not tested.

## Antibody description

SFRS7 Rabbit Polyclonal antibody. Positive IHC detected in human prostate cancer tissue. Positive IF detected in HepG2 cells. Positive WB detected in Transfected HEK-293 cells.

## Preparation

This antibody was obtained by immunization of SFRS7 recombinant protein (Accession Number: NM\_001031684). Purification method: Antigen affinity purified.

## Formulation

PBS with 0.1% sodium azide and 50% glycerol pH 7.3.

## Storage

Store at -20°C. DO NOT ALIQUOT

## Clonality

Polyclonal

## Ig Type

Rabbit IgG

## Applications

ELISA, IHC, IF, WB

## Dilutions

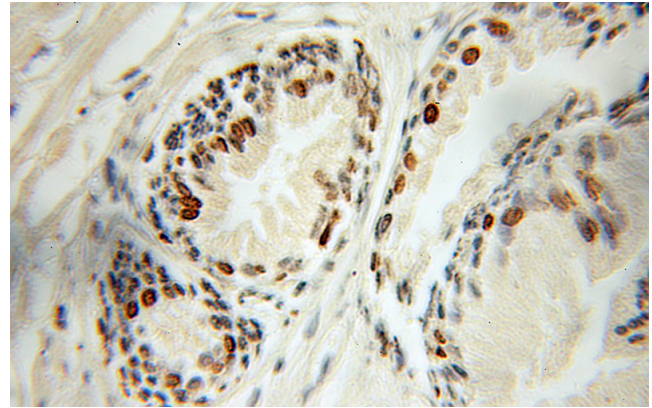
Recommended Dilution:

WB: 1:500-1:5000

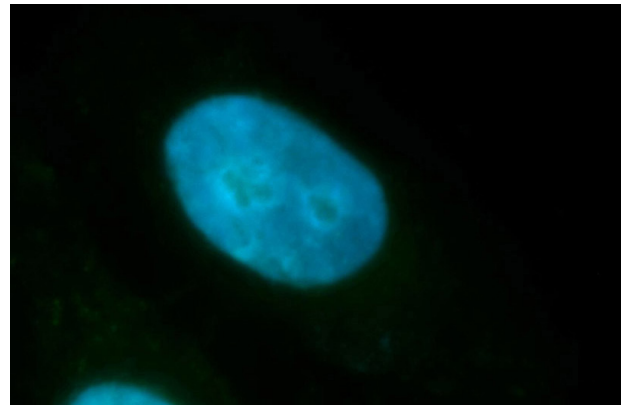
IHC: 1:20-1:200

IF: 1:20-1:200

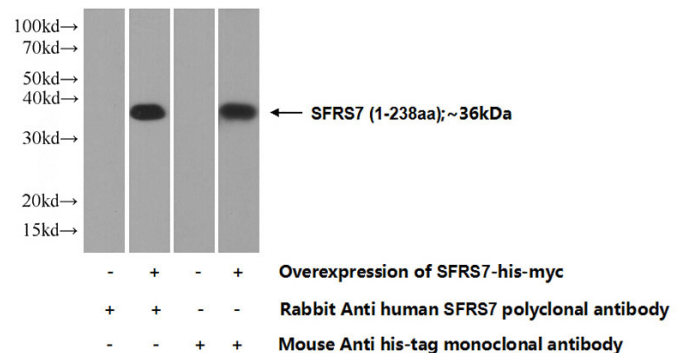
## Validations



Immunohistochemical of paraffin-embedded human prostate cancer using Catalog No:115152(SFRS7 antibody) at dilution of 1:50 (under 10x lens)



Immunofluorescent analysis of HepG2 cells, using SFRS7 antibody Catalog No:115152 at 1:100 dilution and FITC-labeled donkey anti-rabbit IgG(green). Blue pseudocolor = DAPI (fluorescent DNA dye).



Transfected HEK-293 cells were subjected to SDS

# SFRS7 antibody



Catalog Number: 115152

---

PAGE followed by western blot with Catalog

No:115152(SFRS7 Antibody) at dilution of 1:1000